

PGO
SCOOTERS

Parts Catalog

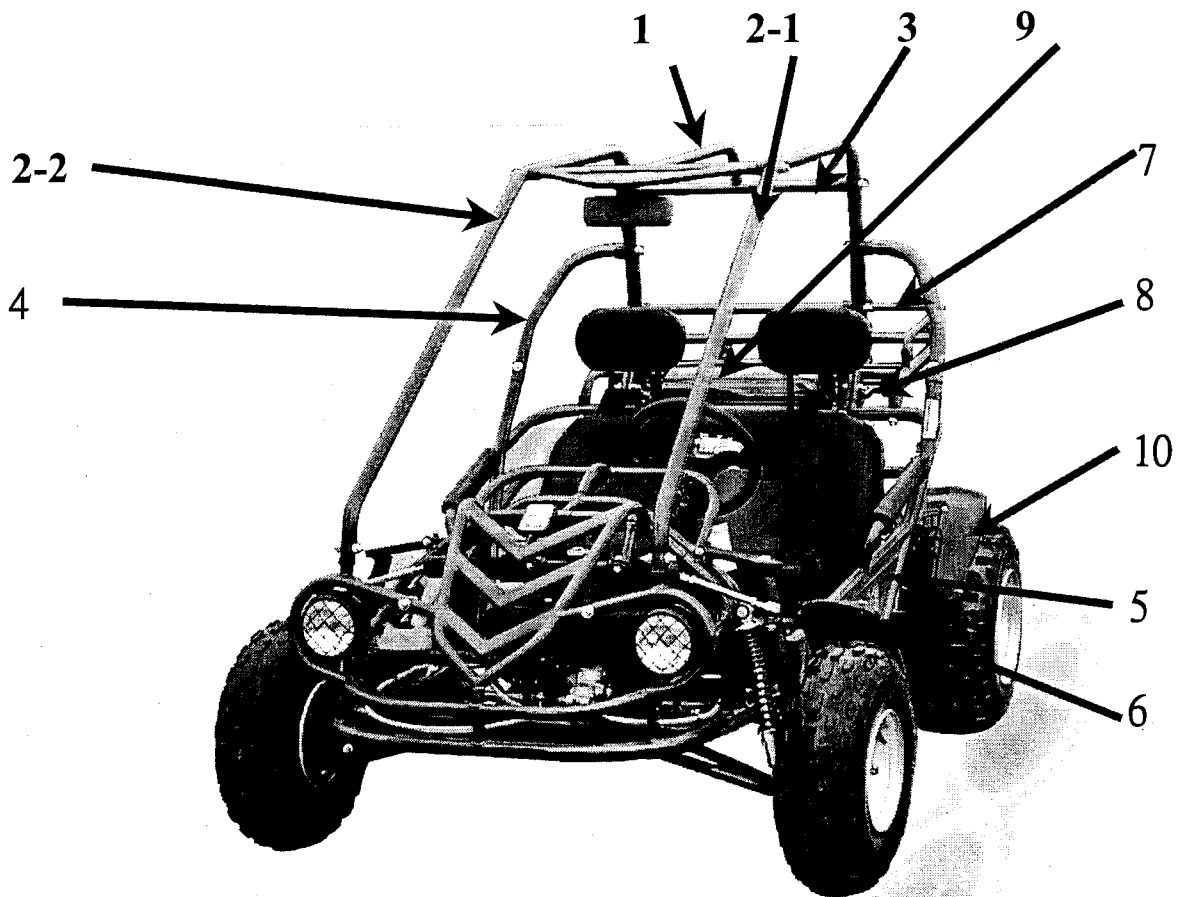
BUGXTER

PGO SCOOTERS

Printed in DEC., 2004 by MPI QAC, 2nd version

OUTLOOK APPEARANCE COLOR CODE

ITEM	PART NO. RAW MATERIAL	PART NAME	RED (1M)	GREEN (3D)	BLUE (4X)
1	B5421010000	ROLL CAGE CROSS. FRT	B54210101M0	B54210103D0	B54210104X0
2-1	B5421020000	ROLL CAGE BAR., LH	B54210201M0	B54210203D0	B54210204X0
2-2	B542A020000	ROLL CAGE BAR.,RH	B542A0201M0	B542A0203D0	B542A0204X0
3	B5421030000	ROLL CAGE CROSS BAR. RR	B54210301M0	B54210303D0	B54210304X0
4	B5421040000	ROLL CAGE BAR. L.R.SIDE	B54210401M0	B54210403D0	B54210404X0
5-2	B54210000004	FRAME COMP(RIGHT DRIVE)	B54210001M04	B54210003D04	B54210004X04
6	B5621000000	FENDER. FRT	B5621000000	B5621000000	B5621000000
7	B5676200000	REAR CARGO RACK	B56762001M0	B56762003D0	B56762004X0
8	B5676210000	SUPPORTER.REAR CARGO RACK	B56762101M0	B56762103D0	B56762104X0
9	B5521500000	TANK COMP. FUEL	B55215001M0	B55215003D0	B55215004X0
10	B5634000000	FENDER, RR	B5634000000	B5634000000	B5634000000



E1. CRANKCASE

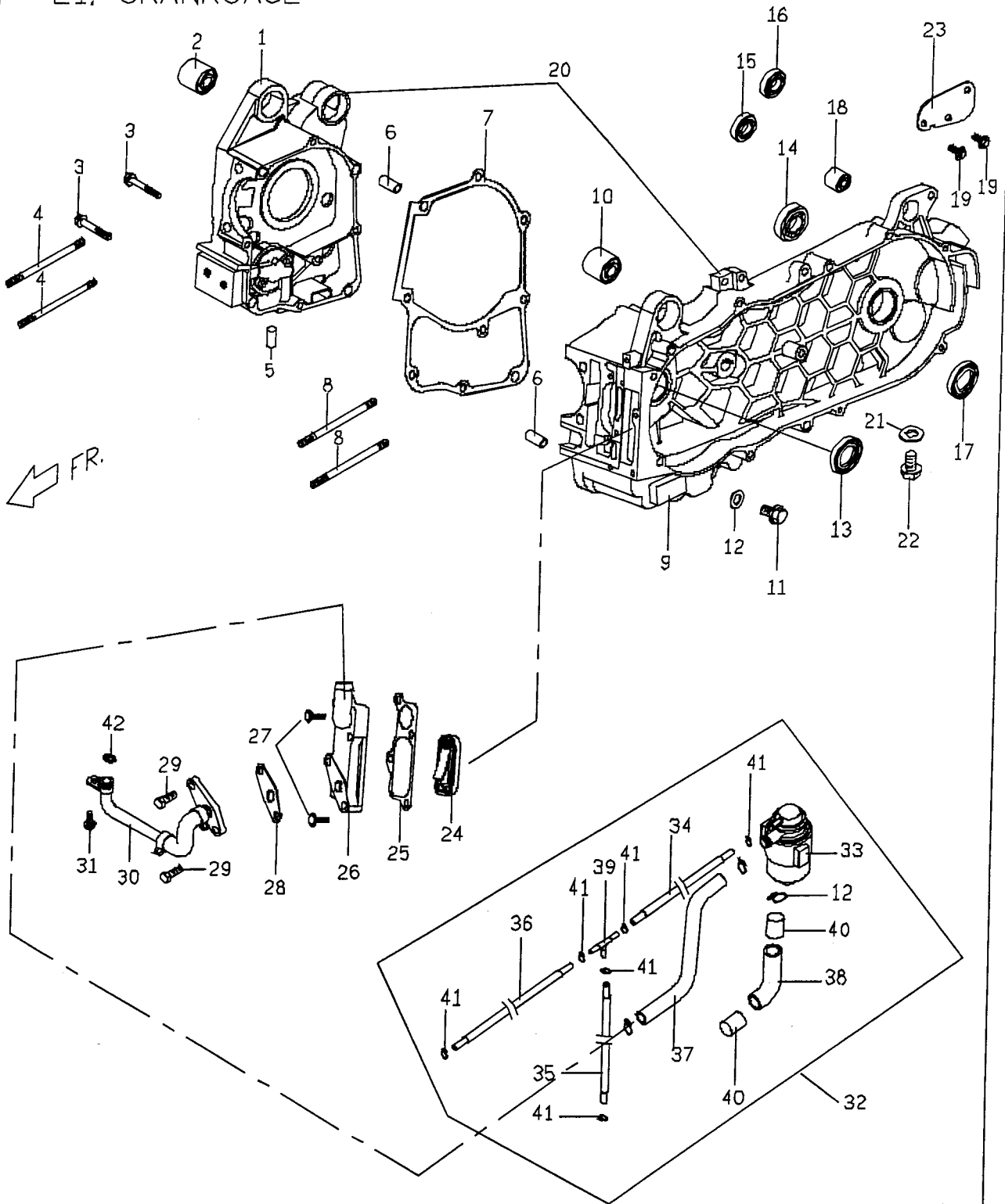


FIG. 1 ENGINE CRANKCASE

REF NO	PART NO	PART NAME	PART NAME	QTY	REMARK
1	C5061011000	右曲軸箱	RH CRANKCASE	1	
2	E1061020000	防震襯套	RUBBER BUSH	1	
3	90190605003	六角凸緣螺栓 (M6*50L)	HEXAGON FLANGE BOLT	2	
4	90170818800	雙頭螺絲	STUP BOLT	2	
5	G1061070000	油塞	PLUG OIL	1	
6	93540801400	定位銷	LOCK PIN	2	
7	C5061040000	曲軸箱墊片	CRANKCASE GASKET	1	
8	90170819500	雙頭螺絲	STUD BOLT	2	
9	C6062010000	左曲軸箱	LH.CRANKCASE	1	
10	E1061020000	防震襯套	RUBBER BUSH	1	
11	90181201500	六角凸緣螺栓	HEXAGON FLANGE BOLT	1	
12	92141200006	平墊圈	PLAIN WASHER	1	
13	95572032601	TC形油封	OIL SEAL,TC TYPE	1	
14	96510620402	深槽滾珠軸承	DEEP GROOVE BALL BEARING	1	
15	96510620200	深槽滾珠軸承	DEEP GROOVE BALL BEARING	1	
16	96510620301	深槽滾珠軸承	DEEP GROOVE BALL BEARING	1	
17	95572032600	TC形油封	OIL SEAL TC TYPE	1	
18	P1062020000	防震襯套	RUBBER BUSH	1	
19	90190601601	六角凸緣螺栓(M6*16L)	HEXAGON FLANGE BOLT	2	
20	C606K0100001	左右曲軸箱總成	RH AND LH CRANKCASE ASSY.	1	
21	92140800001	平墊圈	PLAIN WASHER	1	
22	90190801200	六角凸緣螺栓	HEXAGON FLANGE BOLT	1	
23	C2706010000	空氣濾清器固定板	FIXING PLATE, AIR CLEANER	1	
24	C5286010000	進氣閥組合	SECOND AIR REED VALVE COMP	1	
25	C1286160000	進氣閥襯墊	GASKET SECOND AIR COVER	1	
26	C5286060000	空氣進氣蓋	COVER,SECOND AIR	1	
27	90190602700	六角凸緣螺栓(M6*27L)	HEXAGON FLANGE BOLT	2	
28	C1286190000	進氣導管襯墊(2)	GASKET,TUBE	1	
29	90190603502	六角凸緣螺栓	HEXAGON FLANGE BOLT	2	
30	C3286201000	進氣導管組合	TUBE COMP	1	
31	90190601203	六角凸緣螺栓	HEXAGON FLANGE BOLT	1	
32	B5286300000	空氣導入控制閥總成	AIAC COMP.	1	
33	P62862100001	空氣導入控制閥組合	AIAC ASSY.	1	
34	B5286240000	負壓管(A)	VACUUM PIPE (A)	1	
35	B5286250000	負壓管(B)	VACUUM PIPE (B)	1	
36	B5286260000	負壓管(C)	VACUUM PIPE (C)	1	
37	B5286270000	通氣管(A)	TUBE (A)	1	
38	P6286270000	通氣管(B)	TUBE (B)	1	
39	C1286290000	三通管座	THREE WAY, PIPE	1	
40	C1286310000	消音棉	ISOLATION	2	
41	92200700000	軟管夾	HOSE CLAMP	6	
42	95511000001		O RING	1	

E2. BR150_ OIL COOLER & LH COVER

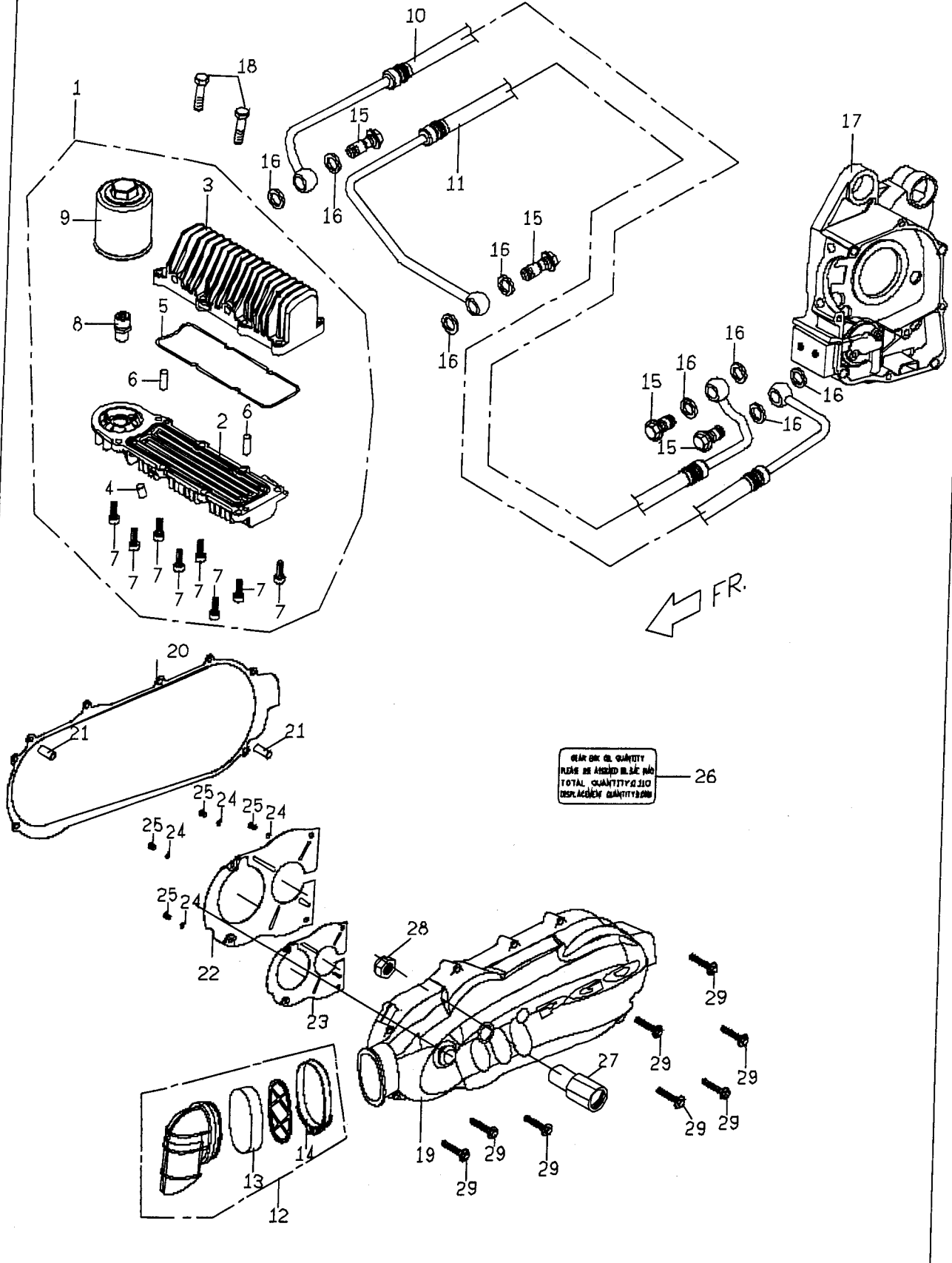


FIG. 2 ENGINE OIL COOLER

REF NO	PART NO	PART NAME	PART NAME	Q'TY	REMARK
1	C5083010000	機油冷卻器組合	OIL COOLER ASSY.	1	
2	C5083020000	上冷卻器	RADIATOR, UPPER	1	
3	C5083030000	下冷卻器	RADIATOR, LOWER	1	
4	G1067010000	油塞	OIL PLUG	1	
5	C5083040000	油封	OIL SEAL	1	
6	93560401000	定位銷	LOCK PIN	2	
7	90210601800	六角承窩螺絲	HEXAGON SOCKET HD. CAP SCREW	8	
8	C5083080000	機油冷卻器接頭	OIL FILTER JOINT	1	
9	C1082020000	機油冷卻器	OIL FILTER	1	
10	B5083050000	機油冷卻器油管(1)	OIL COOLER PIPE(1)	1	
11	B5083060000	機油冷卻器油管(2)	OIL COOLER PIPE(2)	1	
12	C1063102000	通風管組合	BREATHER PIPE COMP	1	
13	C1063092000	過濾棉	SPONGE,BREATHER PIPE	1	
14	C1706280000	管夾	CLAMP	1	
15	C5083070000	機油旁通螺絲	OIL PASS BOLT	4	
16	92141200006	平墊圈	PLAIN WASHER	8	
17	C5061011000	右曲軸箱	RH CRANKCASE	1	
18	90190807500	六角凸緣螺栓(M8*75L)	HEXAGON FLANGE BOLT	2	
19	C2063012720	左邊蓋(散銀色)	LH SIDE COVER	1	
20	C2063020000	左邊蓋襯墊	GASKET LEFT COVER	1	
21	93540801400	定位銷	LOCK PIN	2	
22	C20630600001	隔板	PARTITION PLATE	1	
23	C20631200001	隔板襯墊	PACKING, PARTITION PLATE	1	
24	92110500000	彈簧鎖緊墊圈	SPRING WASHER	6	
25	90050500900	十字圓頭機器螺釘	C-R ROUND HD. TAPPING SCREW	6	
26	C16031400001	齒輪油注意貼紙(英文)	GEAR OIL NOTICE LABEL(ENGLISH)	1	
27	B5281060000	排氣管固定軸	AXLE, FIXING MUFFLER	1	
28	92061400000	凸緣U型螺帽	U NUT	1	
29	90190604001	六角凸緣螺栓	HEXAGON FLANGE BOLT	8	

E3. CYLINDER HEAD, CYLINDER HEAD COVER

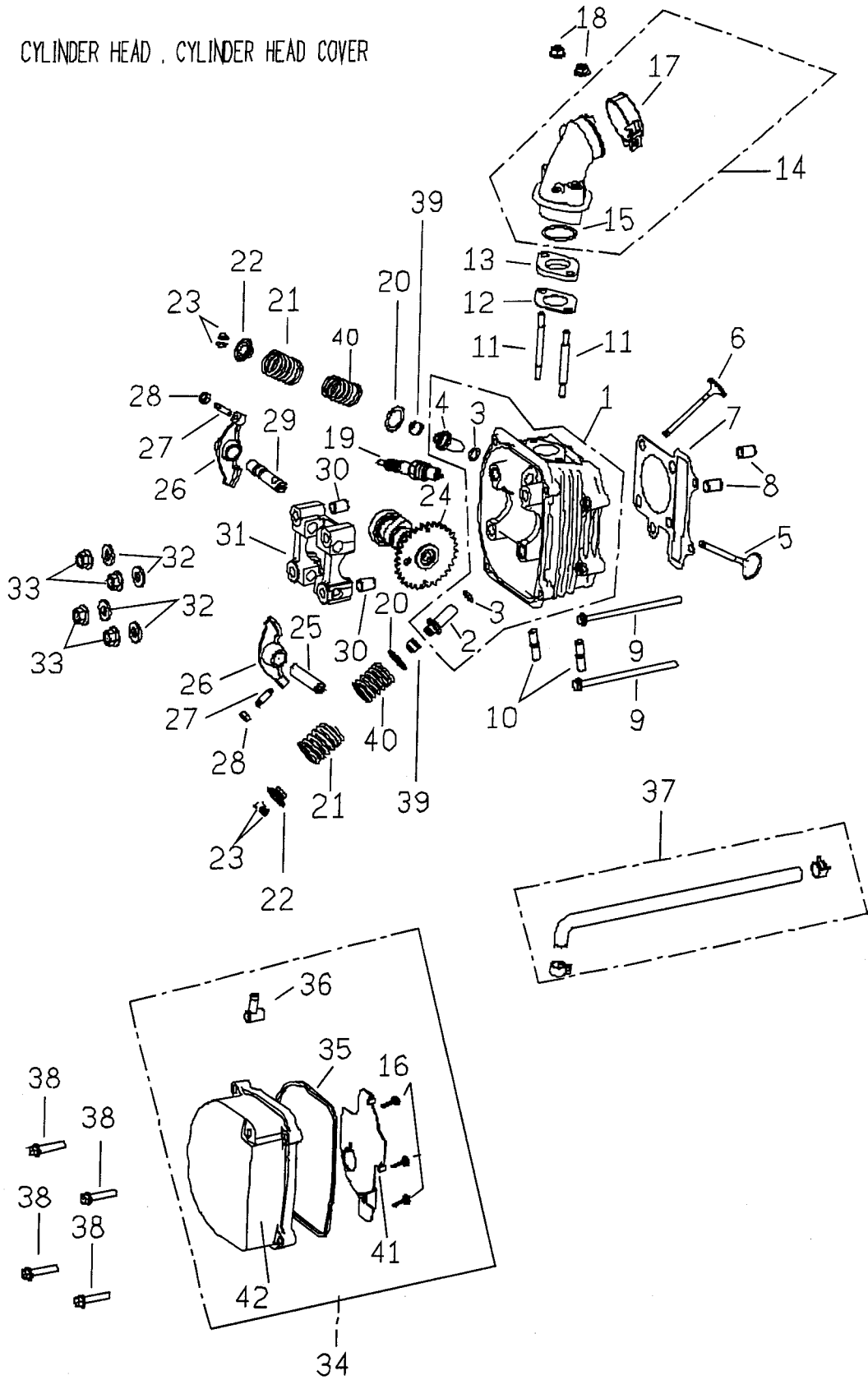


FIG. 3 ENGINE CYLINDER HEAD

REF NO	PART NO	PART NAME	PART NAME	Q'TY	REMARK
1	C50710120001	汽缸頭	HEAD COMP. CYLINDER	1	
5	C5071200000	排氣閥	VALVE EXHAUST	1	
6	C5071300000	進氣閥	VALVE INLET	1	
7	C5071071000	汽缸頭墊片	GASKET HEAD CYL.	1	
8	93541001401	定位銷	LOCK PIN	2	
9	90190610000	六角凸緣螺栓	HEXAGON FLANGE BOLT	2	
10	90170802900	雙頭螺栓	STUD BOLT	2	
11	90170606300	雙頭螺栓	STUD BOLT	2	
12	C1261320000	化油器絕緣板墊片	INSULATOR CARB GASKET	1	
13	C1261310000	化油器絕緣板	INSULATOR CARB	1	
14	C1261052000	進氣歧管組合	INTAKE MANIFOLD COMP	1	
15	95512700001	O形環	O RING	1	
16	90150400800	十字槽扁圓頭自攻螺釘	C-R TAPPING MACHINE SCREW	4	
17	C1261061000	管束	HOSE CLAMP	1	
18	92040600000	六角凸緣螺帽	HEXAGON FLANGE NUT	2	
19	C12220000002	火星塞	IGNITION PLUG (CR7HSA)	1	
20	92431600002	平墊圈	PLAIN WASHER	2	
21	C5071411000	閥門外彈簧	OUTER SPRING, VALVE	2	
22	C1071440000	閥門彈簧承盤	RETAIER VALVE SPRING	2	
23	C1071430000	閥門栓	COTTER VALVE	4	
24	C5073000000	凸輪軸總成	CAM, SHAFT ASSY.	1	
25	C1072060000	排氣閥搖臂軸	SHAFT, EX.ROCKER ARM	1	
26	C1072010000	閥門搖臂	VALVE RXKER ARM	2	
27	C1072420000	挺桿調整螺絲	SCREW TOPPED ADJUSTER	2	
28	92020500001	六角螺帽	HEXAGON NUT	2	
29	C1072050000	進氣搖臂軸	SHAFT, EX.ROCKER ARM	1	
30	93541001401	定位銷	LOCK PIN	2	
31	C1072430000	凸輪軸固定座	CAMSHAFT HOLDER	1	
32	92140800000	平墊圈	PLAIN WASHER	4	
33	92040800000	六角凸緣螺帽	HEXAGON FLANGE NUT	4	
34	C2071102000	汽缸頭蓋組合	CYL.HEAD COVER COMP.	1	
35	C1071120000	汽缸頭蓋襯墊	DACKING, CYL. HEAD COVER	1	
36	C1071130000	通氣管塞	TUBE CYL HEAD COVER	1	
37	ES071190000	通氣管組合	TUBE CYL COMP.	1	
38	90190602700	六角凸緣螺帽	HEXAGON FLANGE BOLT	4	
39	C1071451000	閥門油封	VALVE SEAL	2	
40	C5071421000	閥門內彈簧	INNER SPRING, VALVE	2	
41	C10711500001	隔板	PARTITION PLATE	1	
42	C10711100003	汽缸頭蓋	CYLINDER HEAD	1	

E4. CYLINDER . PISTON . CRANKSHAFT

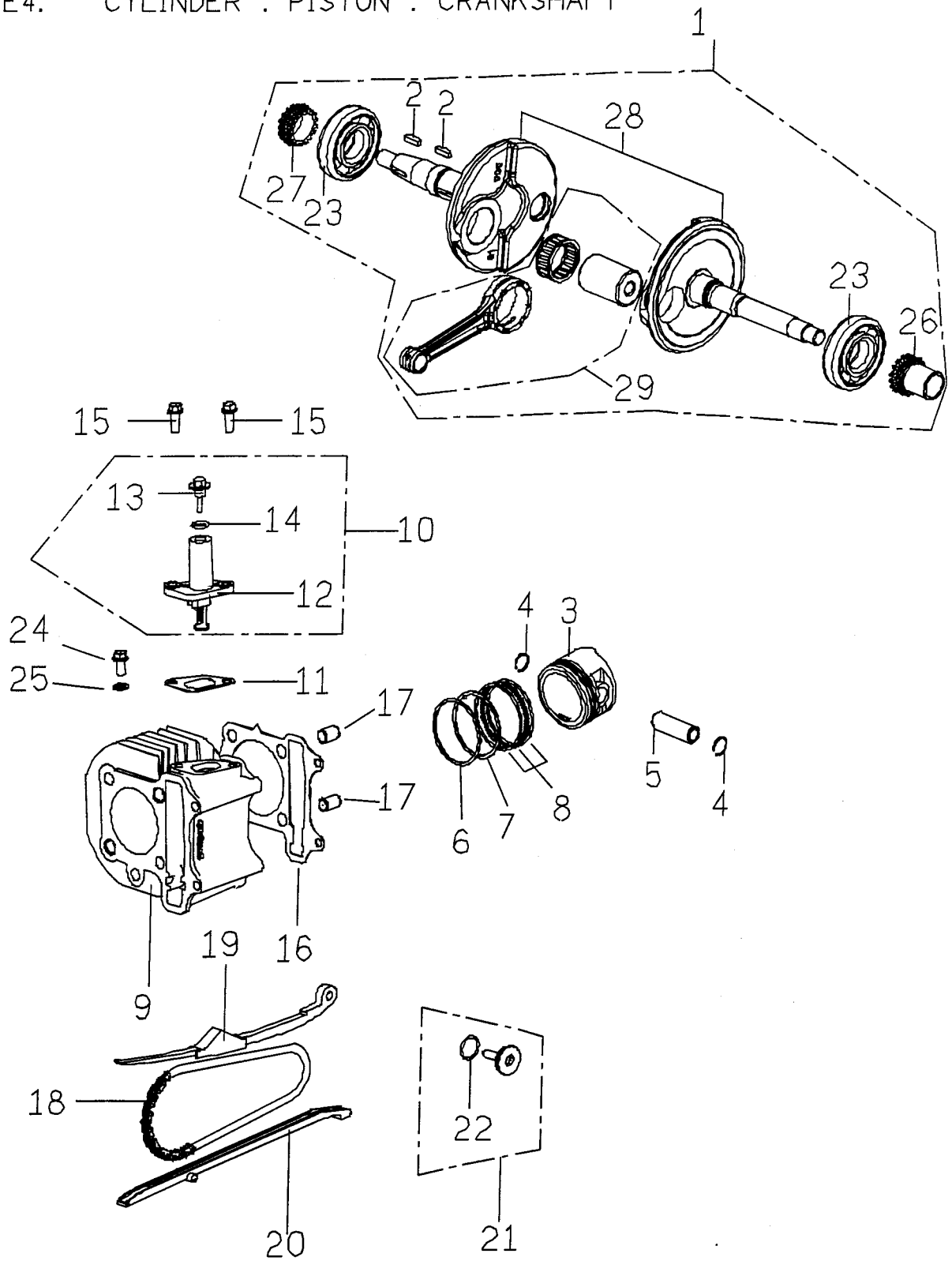


FIG. 4 ENGINE CRANKSHAFT

REF NO	PART NO	PART NAME	PART NAME	Q'TY	REMARK
1	C5066500003	曲柄軸組合	CRANKSHAFT COMP.	1	
2	93530402500	半月鍵	WOODRUFF KEY	2	
3	C50670110001	活塞	PISTON	1	
4	G1067151000	活塞銷夾	CLIP,PISTON PIN	2	
5	C5067110000	活塞銷	PISTON PIN	1	
6	C50673100001	活塞環(1)	PISTON RING (1)	1	
7	C50673200001	活塞環(2)	PISTON RING (2)	1	
8	C50674000001	刮油環組合	OIL SCRAPER RING COMP	1	
9	C50640100004	汽缸	CYLINDER (57.5mm)	1	
10	C5072500000	鏈條調整器組合	CHAIN ADJUSTER COMP.	1	
11	C5072480000	鏈條調整器墊片	GASKET,CHAIN ADJUSTER	1	
13	90070600600	機器螺釘	CR TRUSS HEAD TAPPING SCREW	1	
14	95511000002	O形環	O-RING	1	
15	90180602000	六角凸緣螺絲	HEXAGON FLANGE BOLT	2	
16	C5064110000	汽缸墊片	GASKET CYLINDER	1	
17	93541001401	定位銷	LOCK PIN	2	
18	C10724600001	凸輪軸鏈條	CHAIN,CAMSHAFT	1	
19	C1072440000	鏈條拉力桿	TENSIONER,CAM CHAIN	1	
20	C5072470000	鏈條導件	GUIDE COMP,CAM CHAIN	1	
21	C1072490000	拉力桿螺絲組合	PIVOT,CAM CHAIN TENSION COMP	1	
22	95511500001	O形環	O RING	1	
23	C1062100000	滾珠軸承	ROLLER BEARING	2	
24	90190601203	六角凸緣螺栓	HEXAGON FLANGE BOLT	1	
25	92140600011	平墊圈	PLAIN WASHER	1	
26	C5066130000	時規鏈輪	TIMING SPROCKET	1	
27	C1066140000	機油泵鏈輪	OIL PUMP SPROCKET	1	
28	M206F010000	左右曲軸組合	LH & RH CRANK ASSY.	1	
29	C506F1100002	連桿組合	CONNECTING ROD ASSY.	1	

E5 STARTING MOTOR, OIL PUMP

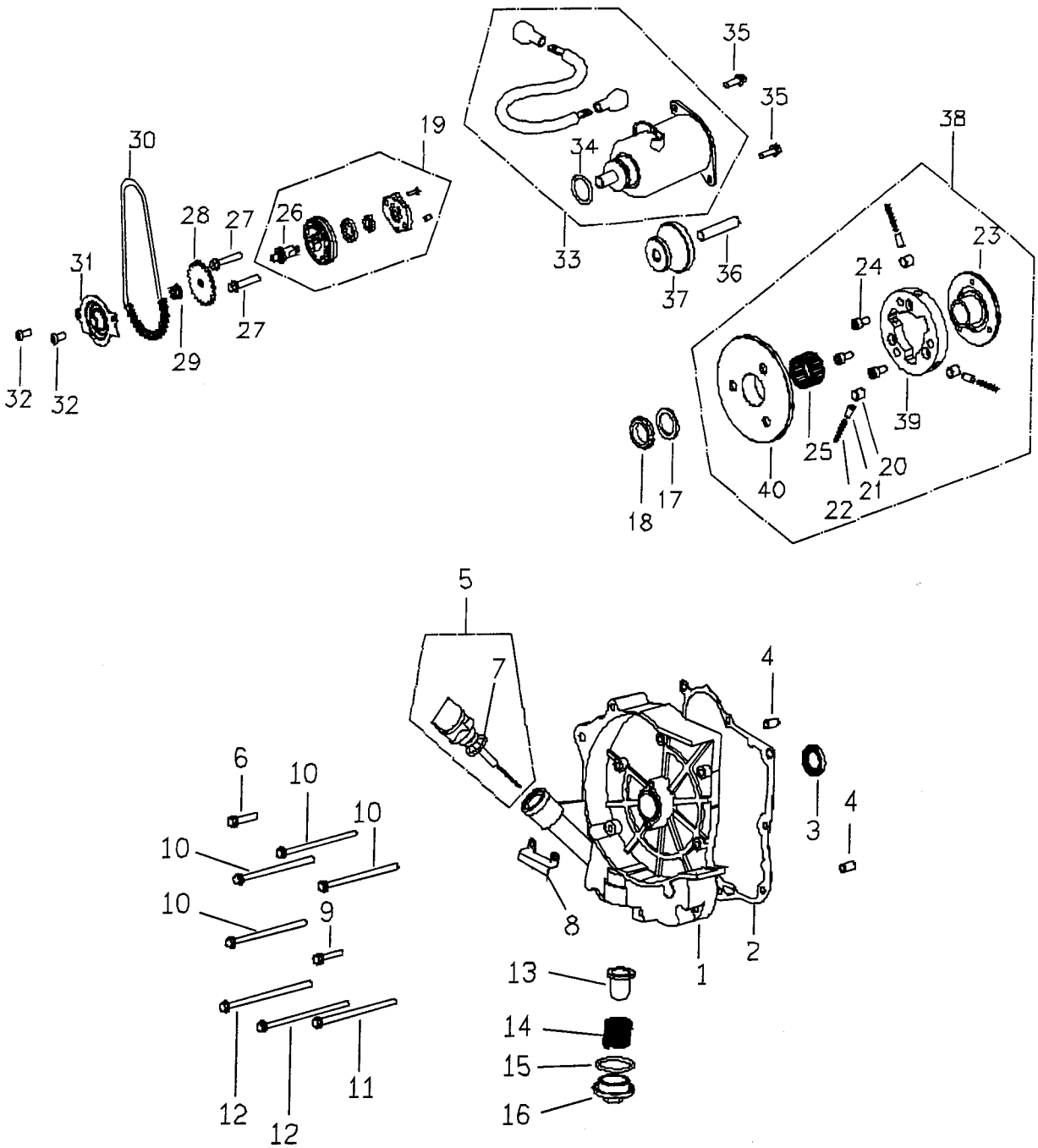


FIG. 5 ENGINE RIGHT CRANKCASE COVER

REF NO	PART NO	PART NAME	PART NAME	Q'TY	REMARK
1	C1068010001	右曲軸箱蓋	RH. CRANKCASE COVER	1	
2	C1068020000	右曲軸箱蓋墊片	GASKET RH. CRANKCASE COVER	1	
3	95572030501	TC形油封(φ 30* φ 18*5t)	OIL SEAL TC TYPE	1	
4	93540801400	定位銷	LOCK PIN	2	
5	C2068110000	機油尺組合	GAUSE,OIL LEVEL COMP	1	
6	90190603000	六角凸緣螺栓	HEXAGON FLANGE BOLT	1	
7	95511800001	O形環	O-RING	1	
8	C1706640000	A.C.G壓板	A.C.G PLATE	1	
9	90190602700	六角凸緣螺栓	HEXAGON FLANGE BOLT	1	
10	90190609500	六角凸緣螺栓	HEXAGON FLANGE BOLT	4	
11	90190610000	六角凸緣螺栓	HEXAGON FLANGE BOLT	1	
12	90190611000	六角凸緣螺栓	HEXAGON FLANGE BOLT	2	
13	G1062180000	濾油網	SCREEN OIL FILTER	1	
14	C1062190000	壓縮彈簧	SPRING OIL FILTER SCREEN	1	
15	95513100000	O形環	O-RING	1	
16	C1062240000	濾油網蓋	CAP TAPPET ADJUSTING HOLE	1	
17	92142200000	平墊圈(22*31*2.5)	PLAIN WASHER	1	
18	C1243060000	鎖定螺帽(左螺紋牙)	NUT LOCK (LEFT THREAD)	1	
19	C1081000000	機油泵總成	OIL PUMP ASSY	1	
20	C1243030000	單向離合器滾柱	ROLLER ONE WAY CLUTCH	3	
21	C1243020000	套筒	COP,ROLLER SPRING	3	
22	G1243010000	壓縮彈簧	COMPRESS SPRING	3	
23	C12430500001	起動離合器凸緣	COVER CLUTCH OUTER	1	
24	90210801000	六角承窩螺栓	INNER HEX BOLT	3	
25	96590283200	滾針軸承	NEEDLE BEARING	1	
26	C1081070000	機油泵軸	SHAFT,OIL PUMP	1	
27	90190602700	六角凸緣螺栓(M6*27L)	HEXAGON FLANGE BOLT	2	
28	C1081030000	機油泵驅動齒輪	SPRKT OIL PUMP DRIVEN	1	
29	92040600000	六角凸緣螺帽(M6*1.0P)	HEXAGON FLANGE BOLT	1	
30	C10812200001	機油泵驅動鏈條	CHAIN,OIL PUMP	1	
31	C1081230000	機油分隔板	SEPARATER OIL	1	
32	E1681030000	帶墊圈螺絲	WITH WASHER HEXAGON SCREW	2	
33	B5241000000	起動馬達組合	STARTING MOTOR COMP.	1	
34	95512400002	O形環	O RING	1	
35	90190601601	六角凸緣螺栓	HEXAGON FLANGE BOLT	2	
36	C1242040000	起動減速齒輪軸	SHAFT,STARTET REDUCTION GEAR	1	
37	C1242010000	起動減速齒輪	GEAR,STARTER REOUCTION	1	
38	C12430000001	單向離合器總成	ONE WAY CLUTCH ASSY.	1	
39	NA	單向離合器組合	ONE WAY CLUTCH COMP.	1	
40	C1244000000	起動離合器齒輪組合	GEAR COMP.STARTING CLUTCH	1	

E6 CARBURETOR

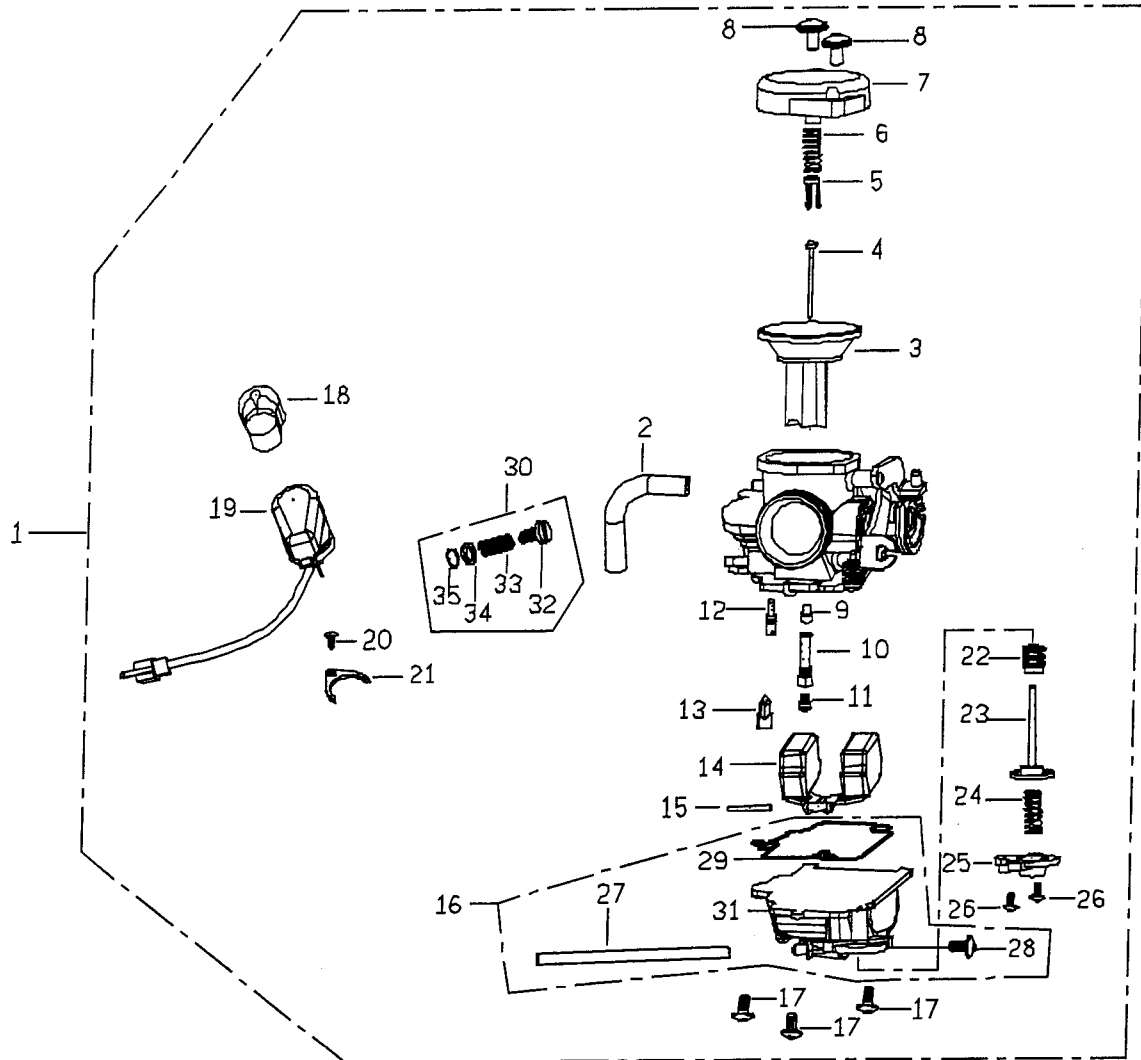


FIG. 6 ENGINE_CARBURETOR

REF NO	PART NO	PART NAME	PART NAME	Q'TY	REMARK
1	C51510010001	化油器總成	CARBURETOR ASSY (CVK046)	1	
2	16199GY69000	橡膠管	TUBE SET	1	
3	14029232201	真空活塞組	VACUUM PISTON COMP	1	
4	N4254HLGL	油針	JET NEEDLE COMP	1	
5	12298057000	閥板	VALVE PLATE SET	1	
6	1290A232000	壓縮彈簧	SPG;COMPR	1	
7	10308737003	上蓋	TOP SET	1	
8	01108031100	螺絲組	SCREW,PAN	2	
9	N42633C00	油針噴嘴	NEEDLE JET	1	
10	N41318C00	油針噴嘴套管	NEEDLE JET HOLDER	1	
11	991011160980	主噴嘴(#98)	MAIN JET	1	
12	1001440H0381	低速噴嘴(#38)	SLOW JET	1	
13	16155ZG8L100	浮動閥組	FLOAT VALVE SET	1	
14	10528622101	浮筒組	FLOAT COMP	1	
15	W952525250	浮筒銷	ARM PIN	1	
16	K3500190600	油室組總成	FLOAT CHAMBER SET	1	
17	93500040121H	螺絲組	SCREW,PAN	3	
18	12308567001	保溫蓋	HOLDER CAP	1	
19	40000940000	自動旁通起動組	AUTO BYSTARTER SET	1	
20	938920400818	墊片螺絲	SCREW WASHER	1	
21	10908732001	固定片	SET PLATE	1	
22	10280547000	封閉蓋	SEALING CAP	1	
23	12018302201	膜片組	DIAPHRAGM COMP	1	
24	1290A072000	壓縮彈簧	SPG;COMPR	1	
25	12308502000	蓋	COVER	1	
26	93500040101H	螺絲	SCREW,PAN	2	
27	1785402H0040	橡膠管	TUBE SET	1	
28	11988222000	卸油螺絲	DRAIN SCREW	1	
29	12028656000	墊片	O RING	1	
30	K4460020100	油量調整螺絲組合	PILOT SCREW SET	1	
31	N35061E00	油室組	FLOAT CHAMBER	1	
32	N44612A00	螺絲	SCREW	1	
33	W17115189901	壓縮彈簧	COMPRESION SPRING	1	
34	03018032000	平墊圈	PLAIN WASHER	1	
35	16075KG89010M1	O形環	O RING	1	

E7 DRIVEN PULLEY

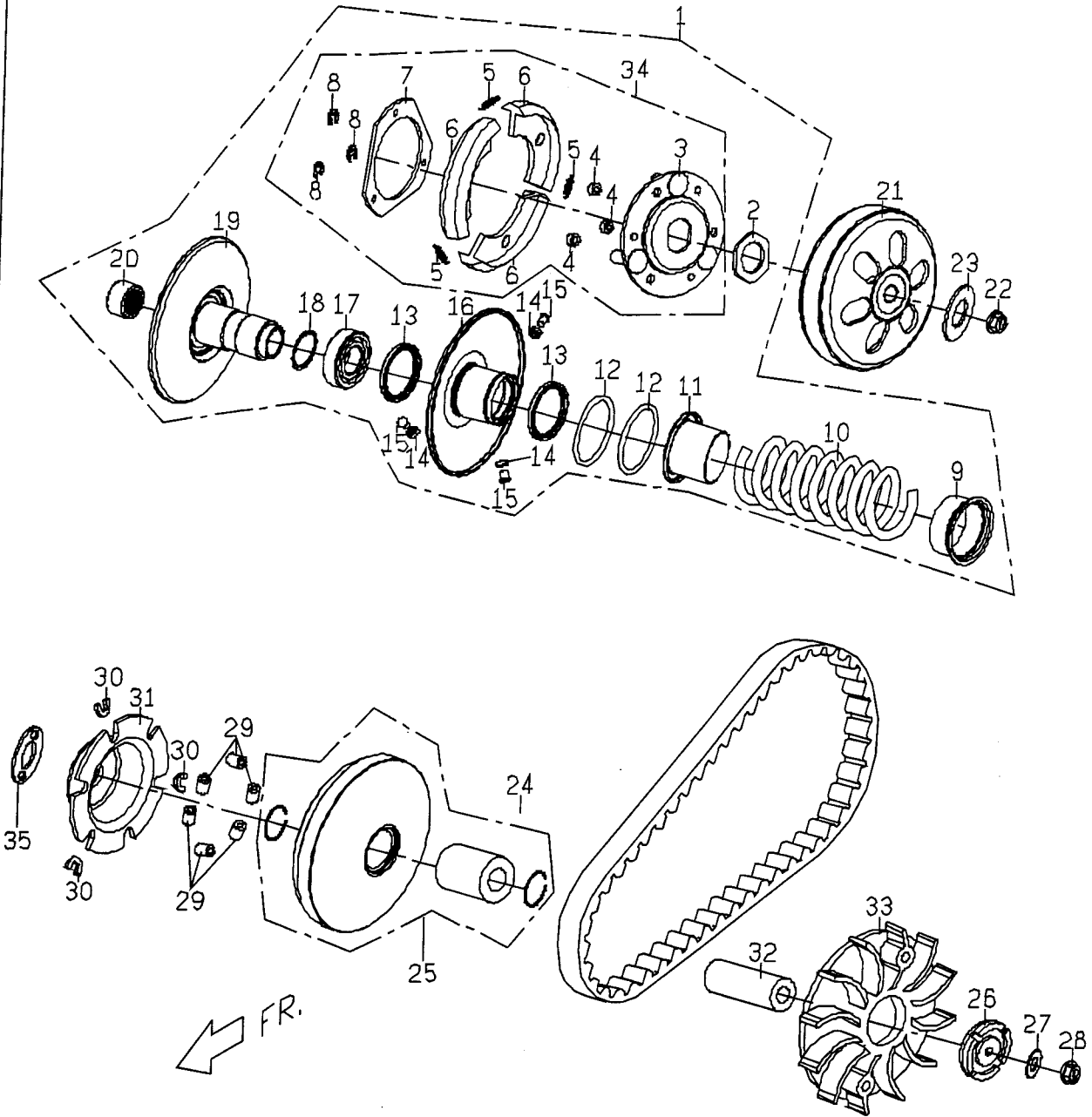


FIG. 7 ENGINE DRIVEN PULLEY

REF NO	PART NO	PART NAME	PART NAME	Q'TY	REMARK
1	C1123700000	被驅動面皮帶輪組合	BELT PULLEY COMP,DRIVEN FACE	1	
2	PI123410000	特殊螺帽	NUT	1	
3	C1123300000	驅動板本體組合	BODY COMP,DRIVE PLATE	1	
4	C1123420000	離合器阻尼橡膠	DAMPER RUBBER,CLUTCH	3	
5	C1123430000	離合器彈簧	SPRING,CLUTCH	3	
6	C1123440000	離合器比重塊	WEIGHT,CLUTCH	3	
7	C1123450000	離合器壓板	PRESSURE PLATE,CLUTCH	1	
8	92180700000	E型扣環	RETAINING RING E TYPE	3	
9	C1123330000	彈簧套筒	COLLAR,SPRING	1	
10	C1123520000	被驅動面彈簧	SPG,DRIVEN FACE	1	
11	C1123530000	密封套筒	SEALED SOCKET	1	
12	95514000001	O形環	O-RING	2	
13	95593441400	G型油封	OIL SEAL G TYPE	2	
14	C1123250000	襯套	BUSH	3	
15	C1123240000	導滾銷	PIN,GRIDE	3	
16	C1123210000	活動被驅動面本體組合	BODY COMP,DRIVEN FACE	1	
17	96520690200	單封深槽滾珠軸承(D28*D	DEEP GROOVE BALL BEAR ONE SEAL	1	
18	92162800000	C型扣環	RETAINING RING C TYPE	1	
19	C1123110000	被驅動面本體組合	DOBY COMP,DRIVEN FACE	1	
20	96550202900	滾針軸承	NEEDLE BEARING	1	
21	C1123510000	離合器外套本體組合	OUTER BODY COMP,CLUTCH	1	
22	92041200002	六角凸緣螺帽	HEXAGON FLANGE NUT	1	
23	92141200005	平墊圈	PLAIN WASHER	1	
24	C21220000001	皮帶	BELT	1	
25	C11211000001	活動驅動面組合	FACE MOVABLE DRIVE	1	
26	C1251030000	起動棘輪	RATCHET KICK STARTER	1	
27	92141200005	平墊圈	PLAIN WASHER	1	
28	92041200002	六角凸緣螺帽	HEXAGON FLANGE NUT	1	
29	C1121200000	配重滾子組合	WEIGHT ROLLER COMP.	6	
30	C1121321000	滑塊	SLIDE PIECE	3	
31	C1121310000	斜坡板	RAMP PLATE	1	
32	C1121050000	活動驅動面輪轂	BOSS,MOVABLE DRIVE FACE	1	
33	C11210600001	驅動面	DRIVE FACE	1	
34	C1123600000	驅動板組合	DRIVEN PULLEY ASSY.	1	
35	C5066051000	間隔套環	SPACE BUSH	1	

E8 AIR CLEANER COMP.

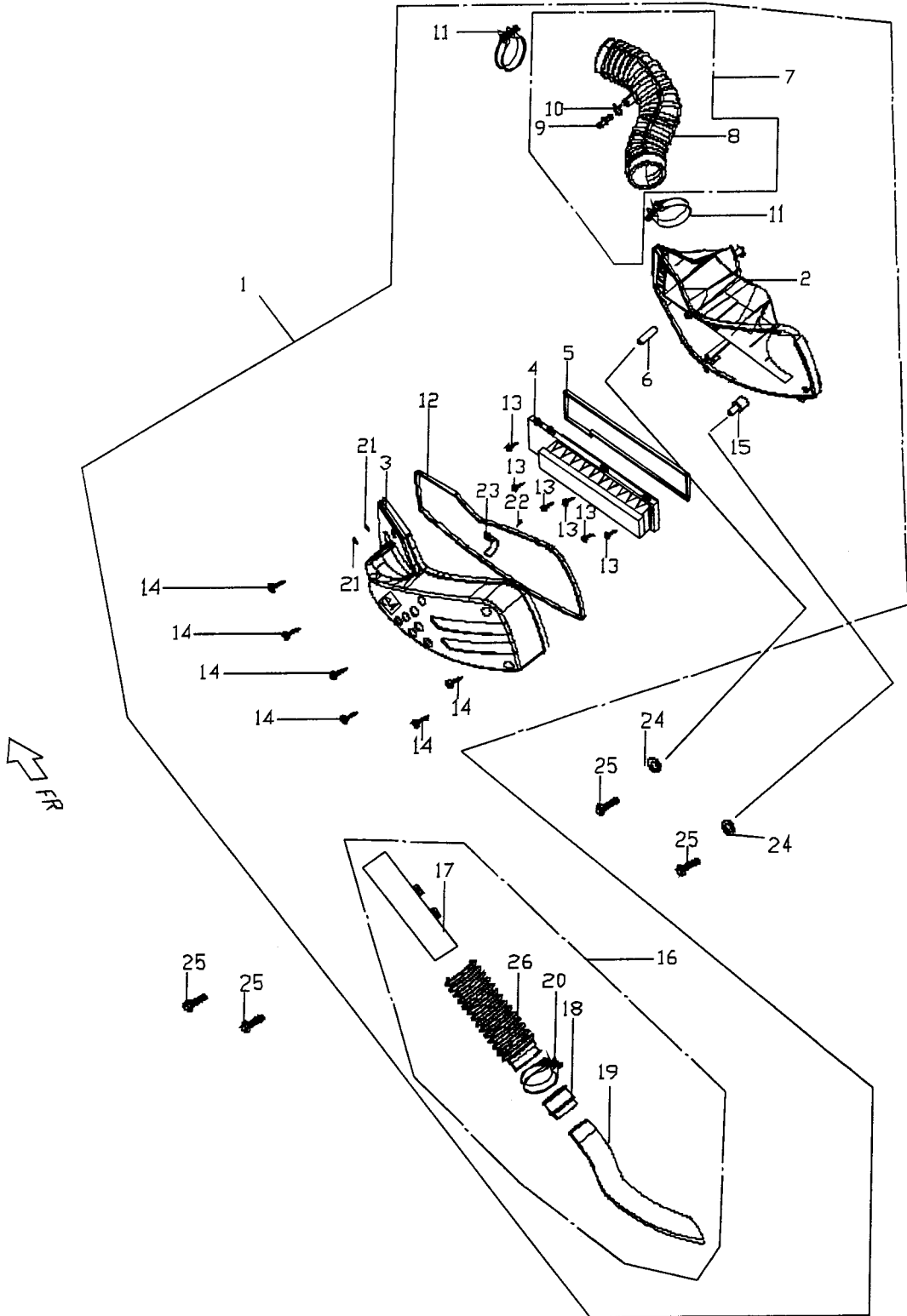


FIG. 8 ENGINE AIRCLEANER ASSEMBLY

REF NO	PART NO	PART NAME	PART NAME	Q'TY	REMARK
1	C5262000002	空氣濾清器組合(外銷用)	AIR CLEANER COMP	1	
3	C2262020000	空氣濾清器蓋	COVER,AIR CLEANER	1	
4	C5262032000	空氣濾清器紙蕊	AIR FILTER	1	
5	C2262040000	空氣濾清器紙蕊襯墊	PACKING,AIR FILTER	1	
6	C2262060000	襯套	BUSH	1	
7	C22623400001	空氣濾清器連接管組合	CONNECTION PIPE,AIR CLEANER	1	
8	C22620800001	空氣濾清器連接管	CONNECTION PIPE	1	
9	C226B340000	二通接管	PIPE, TWO WAY	1	
10	92221100000	板狀管夾	PLANE CLIP	1	
11	C1262110000	管束	CLAP	2	
12	C2262230000	空濾器墊片	AIR CLEANER PACKING	1	
13	90150501600	十字槽盤頭自攻螺絲	CR TRUSS HD TAPPING SCREW	6	
14	90150502500	十字槽盤頭自攻螺絲	CR TRUSS HD TAPPING SCREW	6	
15	C2262250000	襯套	BUSH	1	
16	C2262260000	進氣管組合	INLET PIPE ASSY	1	
17	C2262270000	進氣連接管	INLET CONNECTING PIPE	1	
18	C2262280000	連接管	CONNECTING PIPE	1	
19	C2262290000	內進氣管	INLET PIPE INSIDE	1	
20	C1262110000	管夾	CLAMP	1	
21	90130301300	自攻螺絲	TAPPING SCREW	2	
22	90130501000	自攻螺絲	TAPPING SCREW	1	
23	C2262320000	壓迫板	COMPRESS PLATE	1	
24	92140600005	平墊圈	PLAIN WASHER	2	
25	90190604500	六角凸緣螺絲	HEXAGON FLANGE BOLT	2	
26	C2262210000	進氣連接管	INLET CONNECTING PIPE	1	

E9 FAN COVER, GENERATOR

ENGINE OIL QUANTITY
PLEASE USE ASSIGNED OIL BRAND
TOTAL QUANTITY: 5QT
DISPLACEMENT QUANTITY: 5000
FOR OPERATIONAL USE ON THIS ENGINE
TO OBTAIN IT IS NEAR
CHECK OIL LEVEL IN OIL PAN BY COVERING
METER 2 TIMES AT 10 MIN.

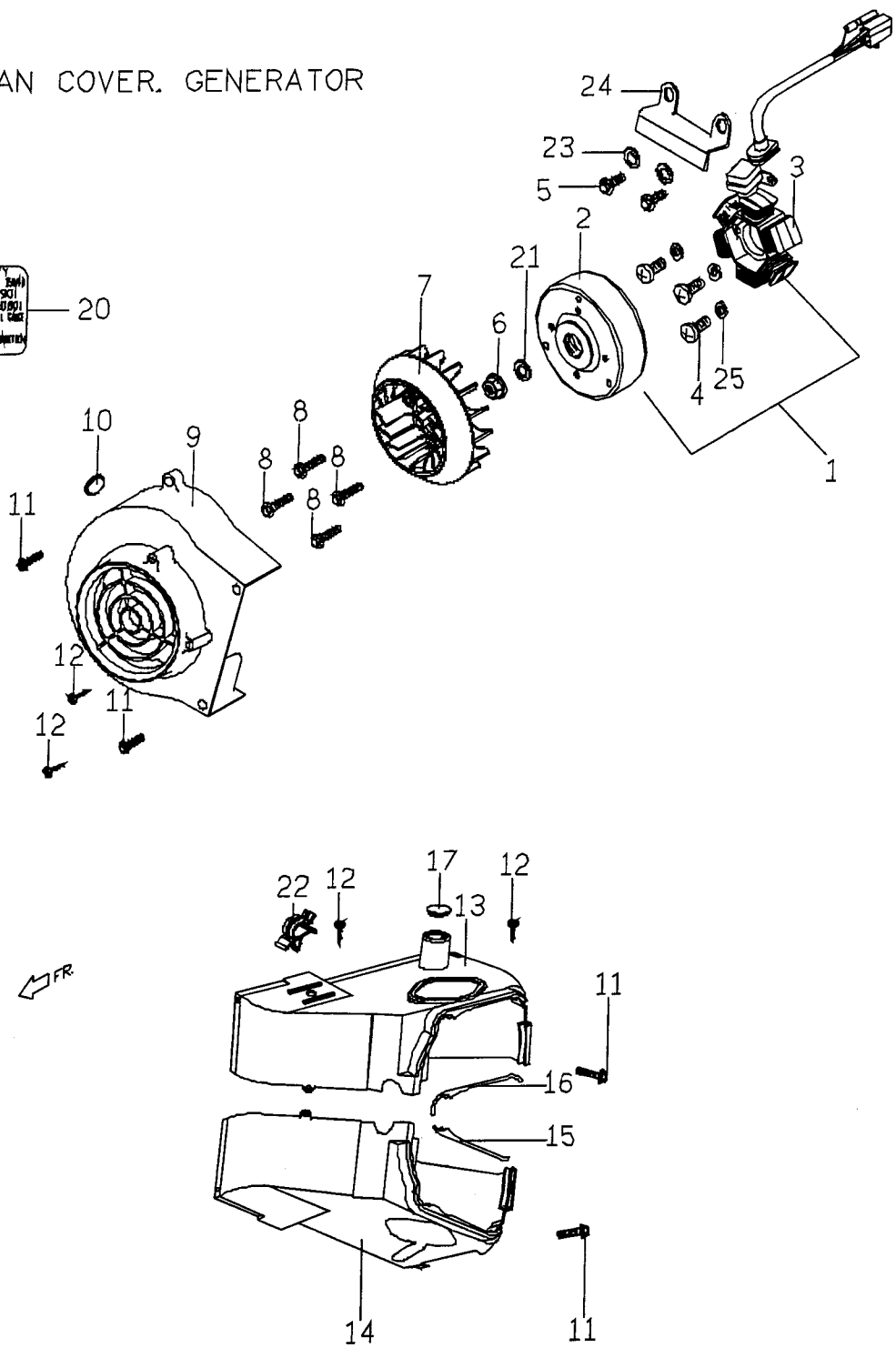


FIG. 9 ENGINE GENERATOR

REF NO	PART NO	PART NAME	PART NAME	Q'TY	REMARK
1	C5221000000	飛輪磁電機總成(直流點燈)	AC GENERATOR ASSY. (DC LIGHTING)	1	
2	C5221010000	飛輪(直流點燈)	FLYWHEEL COMP. (DC LIGHTING)	1	
3	C5221020000	固定子(直流點燈)	STATOR COMP(DC LIGHTING)	1	
4	90210502800	六角凸緣螺栓(M6)	HEXAGON FLANGE BOLT	3	
5	90190501201	六角凸緣螺栓(M5*12L)	HEXAGON FLANGE BOLT	2	
6	92041200000	六角凸緣螺帽	HEXAGON FLANGE NUT	1	
7	C1043001000	風扇	FAN	1	
8	90190601203	六角凸緣螺栓	HEXAGON FLANGE BOLT	4	
9	C1042001000	風扇罩	FAN COVER	1	
10	C1042030000	橡膠塞	RUBBER PLUG	1	
11	90180602000	六角凸緣螺栓(M6*20L)	HEXAGON FLANGE BOLT	4	
12	90150501600	十字槽盤頭自攻螺釘(M5*1)	CR PAN HD TAPPING SCREW	4	
13	C50422110001	冷卻罩(2)	COOLING COWL(2)	1	
14	C5042102000	冷卻罩(1)	COOLING COWL(1)	1	
15	C1042120000	冷卻罩油封(1)	SEAL,COOLING HOOD(1)	1	
16	C1042220000	冷卻罩油封(2)	SEAL,COOLING HOOD(2)	1	
17	C1701260000	橡膠塞	RUBBER PLUG	1	
20	C1603130001	引擎機油注意貼紙(英文)	ENG., OIL NOTICE LABEL	1	
21	92141200005	平墊圈	PLAIN WASHER	1	
22	C1701290000	塑膠鎖扣	PLASTIC LOCKER	1	
23	92110500000	平墊圈	PLAIN WASHER	2	
24	C1706640000	ACG壓板	ACG PLATE	1	
25	92110500000	平墊圈	SPRING WASHER	3	
26	C1042270000	空氣管	AIR PIPE	1	

E10 TRANSMISSION

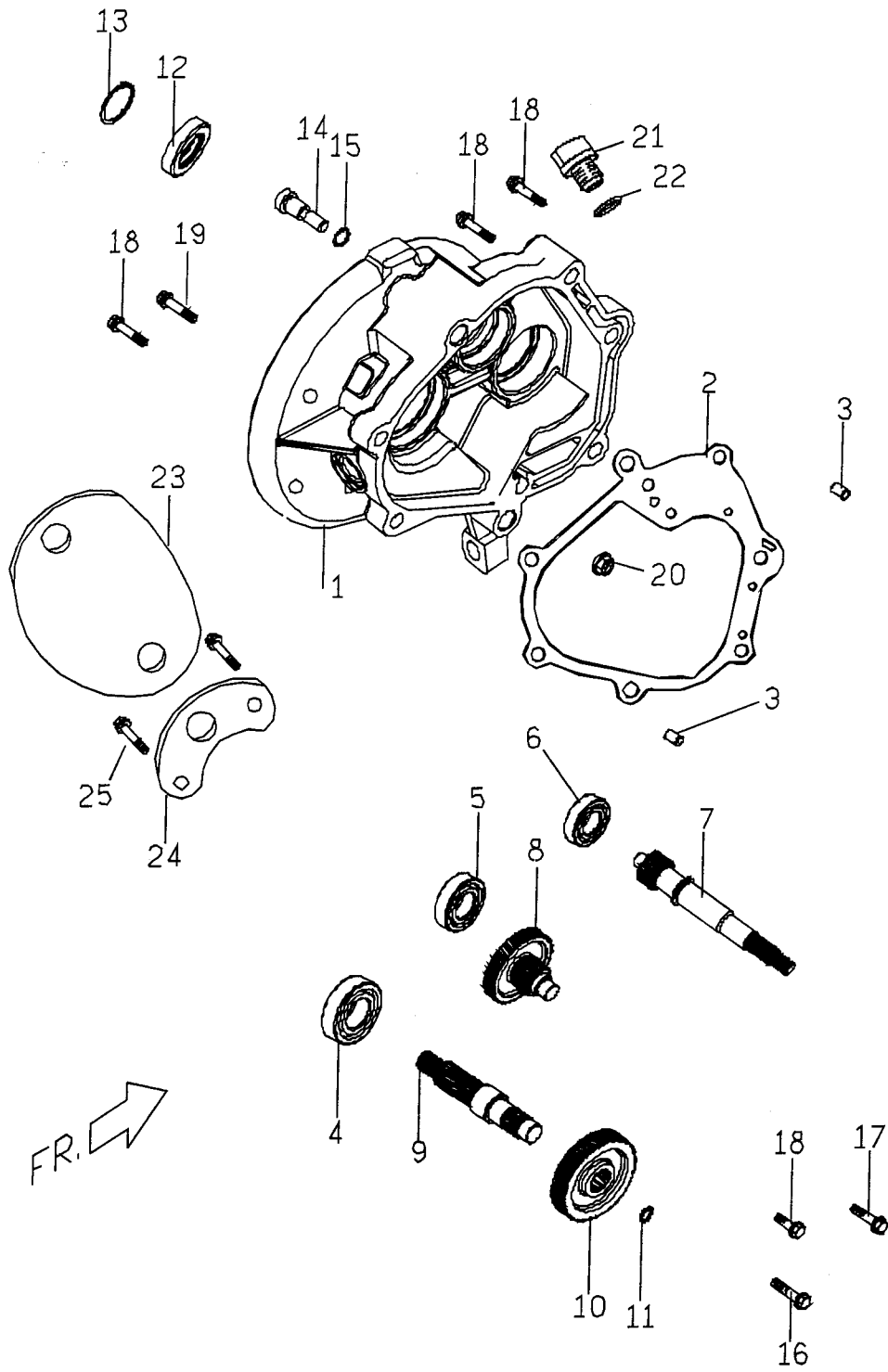


FIG. 10 ENGINE GEARBOX

REF NO	PART NO	PART NAME	PART NAME	Q'TY	REMARK
1	C21410110001	傳動箱蓋	TRANSMISSION COVER	1	
2	C2141020000	傳動箱蓋襯墊	TRANSMISSION COVER GASKET	1	
3	93541001401	定位銷	LOCK PIN	2	
4	96510630100	深槽滾珠軸承(6301)	BALL BEARING	1	
5	96510600200	深槽滾珠軸承(6002)	BALL BEARING	1	
6	96530622200	雙封滾珠軸承(6222)	BALL BEARING.DOUBLE SEALED	1	
7	C61411000001	驅動軸	DRIVE SHAFT	1	
8	C61412000001	惰齒輪組合	IDLE GEAR COMP.	1	
9	B5141410000	後軸	AXLC DRIVE	1	
10	C1141310000	最終齒輪	FINAL GEAR	1	
11	92172000000	C型扣環	RETAINING RING C TYPE	1	
12	95572742700	TC形油封(ϕ 42* ϕ 25.8*7t)	OIL SEAL TC TYPE	1	
13	92165000000	C型扣環(孔用)	RETAINING RING C TYPE	1	
14	M2407430000	後煞車軸蹄樞軸	PIVDT REAR BK.SHDE	1	
15	95510800000	O形環 (7.5*1.5)	O RING	1	
16	90190805001	六角凸緣螺栓 (墨綠)	HEXAGON FLANGE BOLT	1	
17	90190804501	六角凸緣螺栓	HEXAGON FLANGE BOLT	1	
18	90190804003	六角凸緣螺栓	HEXAGON FLANGE BOLT	4	
19	90190803003	六角凸緣螺栓	HEXAGON FLANGE BOLT	1	
20	92060800000	六角凸緣螺帽 (防鬆M8*1)	HEXAGON FLANGE NUT	1	
21	P1062150000	機油螺栓	OIL BOLT	1	
22	95511300001	O形環	O-RING	1	
23	B5701090000	引擎補強板	ENGINE REINFORCED PLATE	1	
24	B5701080000	引擎補強板	ENGINE REINFORCED PLATE	1	
25	90190602002	六角凸緣螺栓	HEXAGON FLANGE BOLT	2	

F11.1 ENGINE/MUFFLER

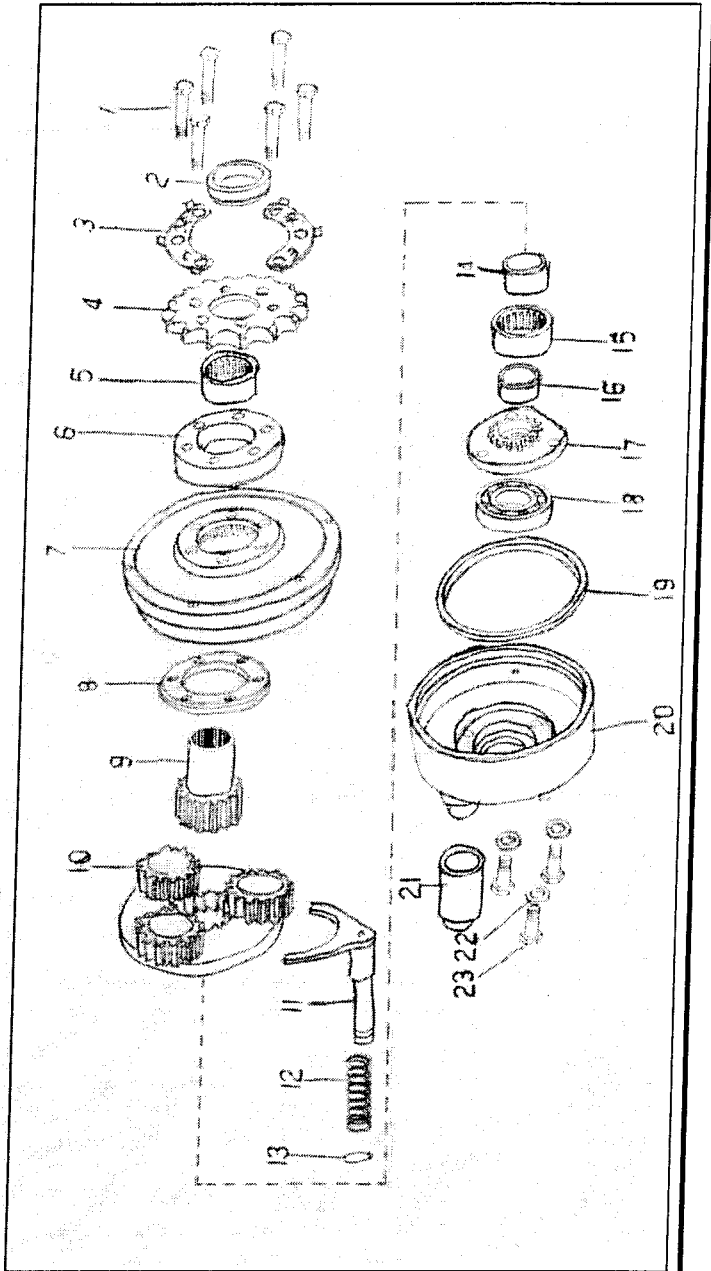
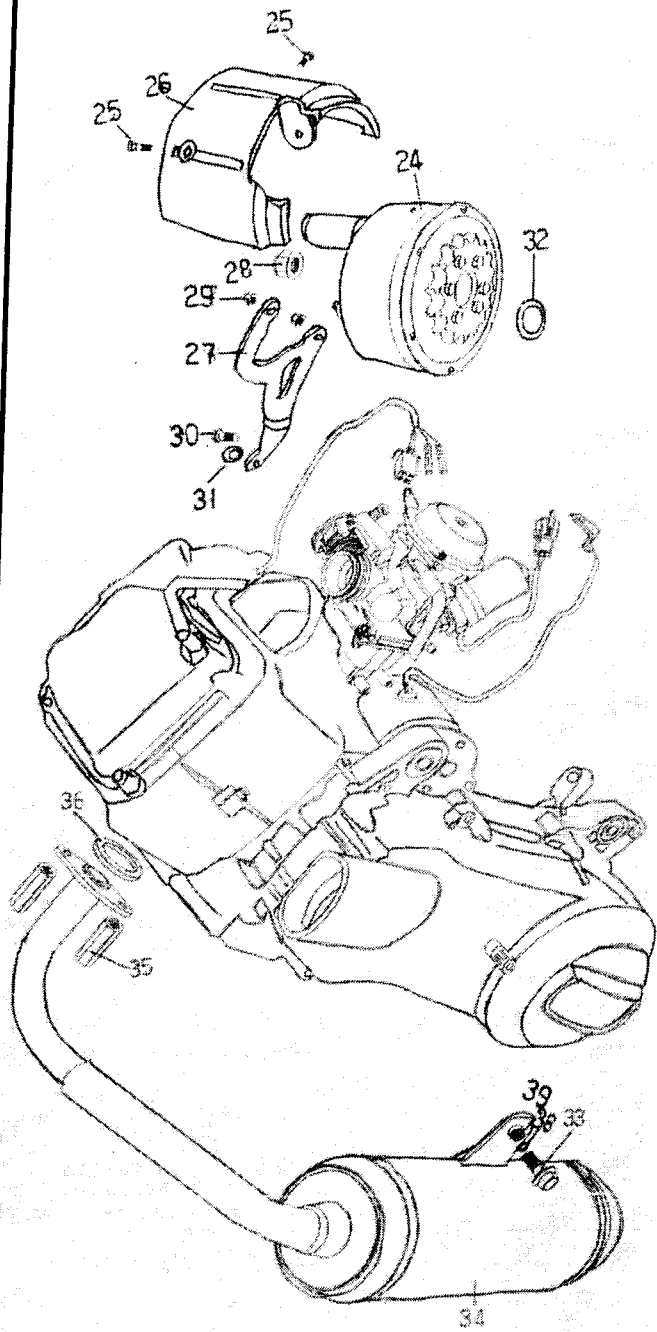


FIG. 11.1 REVERSE ASSY (NEW TYPE, FROM ENGINE NO. H02299).

REF NO	PART NO	品名規格	PART NAME	Q'TY	REMARK
1	90020602502	螺栓(M6 x 1.0 x 25)	BOLT (M6*1.0*25)	6	SERVICE PART ONLY
2	B5144560000	內环	INTERNAL COLLAR	1	SERVICE PART ONLY
3	B5144570000	保持片	KEEPER	2	SERVICE PART ONLY
4	B54922000001	傳動鍊輪	DRIVE SPROCKET	1	SERVICE PART ONLY
5	96550263500	軸承	NEEDLE BEARING 26*35*20	1	SERVICE PART ONLY
6	B5495130000	軸承支撐盤	FLANGE PLATE, GEAR CASE	1	SERVICE PART ONLY
7	B54950100001	左齒輪箱	GEAR CASE.L	1	SERVICE PART ONLY
8	B5495140000	齒輪箱支撐盤	FLANGE PLATE, GEAR CASE	1	SERVICE PART ONLY
9	B54950200001	傳動齒輪	DRIVE GEAR	1	SERVICE PART ONLY
10	B5495030000	對軸齒輪組合	COUNTER GEAR SHAFT COMP	1	SERVICE PART ONLY
11	B54950500001	齒輪換擋軛	GEAR SHIFTING YOKE	1	SERVICE PART ONLY
12	B54950400001	彈簧	SPRING.GEAR SHIFTING YOKE	1	SERVICE PART ONLY
13	B5706090000	管夾	CIRCLIP	1	SERVICE PART ONLY
14	B54950800001	傳動齒輪襯套	BUSHING.DRIVE GEAR	1	SERVICE PART ONLY
15	96550223000	軸承	NEEDLE BEARING 22*30*14	1	SERVICE PART ONLY
16	B54950800002	傳動齒輪襯套	BUSHING.DRIVE GEAR	1	SERVICE PART ONLY
17	B5495150000	齒輪座	GEAR SEAT	1	SERVICE PART ONLY
18	96510600302	軸承	BEARING 6003 DDU	1	SERVICE PART ONLY
19	B54950600001	橡膠油封	RUBBER OIL SEAL	1	SERVICE PART ONLY
20	B54950000001	右齒輪箱	GEAR CASE.R	1	SERVICE PART ONLY
21	B54950900001	齒輪換擋軛護套	COVER.GEAR SHITING YOKE	1	SERVICE PART ONLY
22	92140800009	鎖付墊圈	WASHER. LOCK	3	SERVICE PART ONLY
23	90020802100	盤頭螺栓	SCREW. PAN M8*21	3	SERVICE PART ONLY
24	B51440000001	倒檔齒輪箱總成	REVERSE ASS'Y	1	
25	90200601201	六角螺栓	BOLT WASHER M6	2	
26	B51445400001	鏈條保護板	CHAIN PROTECTOR, RR	1	
27	B51445200001	倒檔齒輪箱托架	BRACKET, REVERSE	1	
28	92011600000	凸緣螺帽	NUT FLANGE LOCK M16	1	
29	92020800006	凸緣螺帽	NUT FLANGE LOCK M8	2	
30	90190803201	六角螺栓	BOLT STRAP M8*1.25*32	1	
31	92110800000	彈簧墊圈	SPRING WASHER	1	
32	B51445100001	內間隔環	INTERNAL SPACER	1	
33	90190804003	六角螺栓	HEXAGON BOLT	1	
34	B52810000001	消音器總成	MUFFLER ASS'Y	1	
35	92050800000	堡形螺帽	CASTLE NUT	2	
36	E9281020000	消音器墊片	GASKET, MUFFLER	1	
38	92110800000	彈簧墊圈	SPRING WASHER	1	
39	92140800000	平墊圈	PLAIN WASHER	1	

F12.1. FRAME

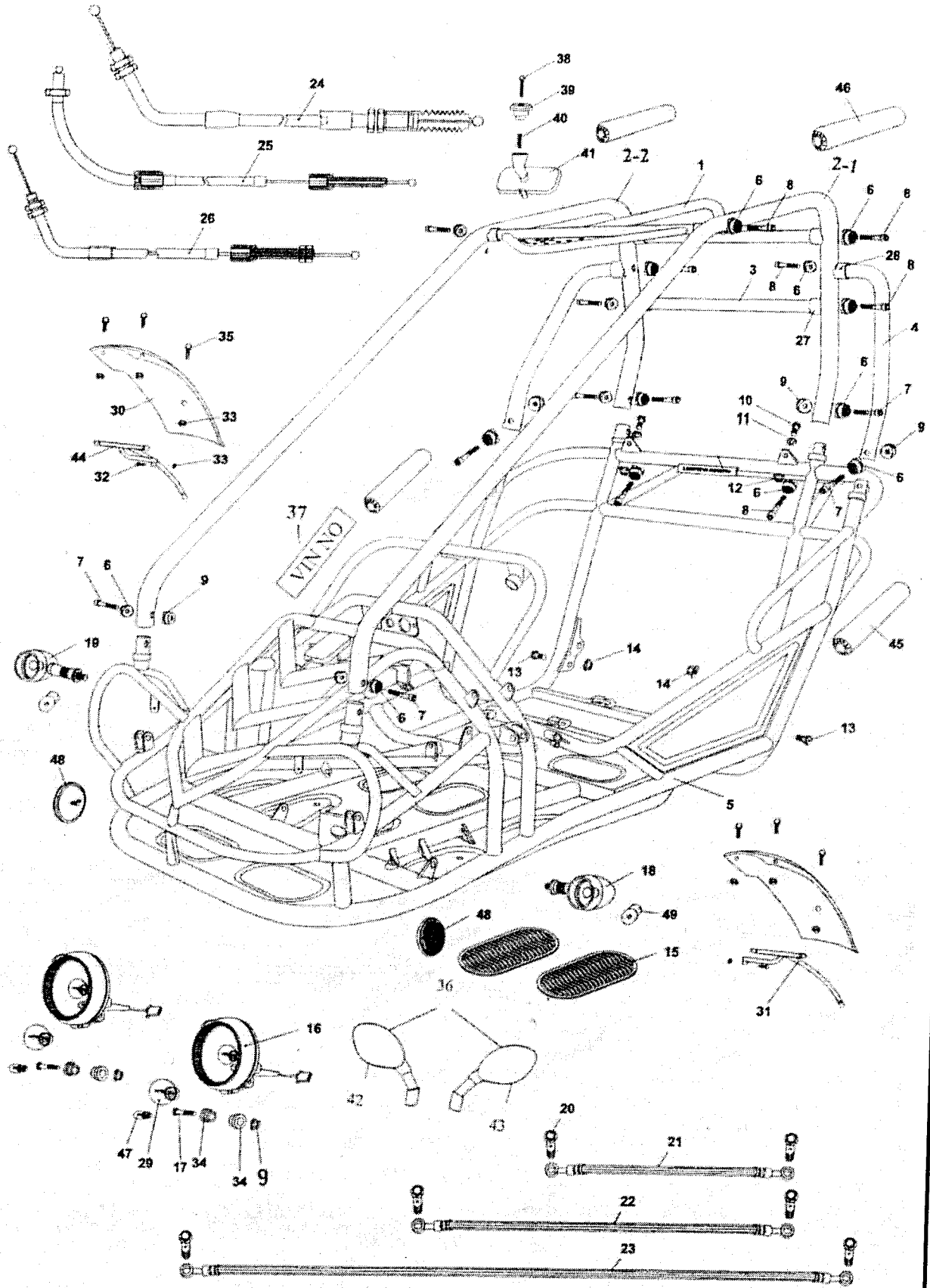


FIG. 12 FRAME GROUP

REF NO	PART NO	品名規格	PART NAME	Q'TY	REMARK
1	B54210101M0	前橫桿	ROLL CAGE CROSS. FRT(RED #1M)	1	
1	B54210103D0	前橫桿	ROLL CAGE CROSS. FRT(Green #3D)	1	
1	B54210104X0	前橫桿	ROLL CAGE CROSS. FRT (Blue # 4X)	1	
2-1	B54210201M0	左橫桿	ROLL CAGE BAR., LH(Red #1M)	1	
2-1	B54210203D0	左橫桿	ROLL CAGE BAR., LH (Green #3D)	1	
2-1	B54210204X0	左橫桿	ROLL CAGE BAR., LH (Blue # 4X)	1	
2-2	B542A0201M0	右橫桿	ROLL CAGE BAR. ,RH (Red #1M)	1	
2-2	B542A0203D0	右橫桿	ROLL CAGE BAR. ,RH (Green #3D)	1	
2-2	B542A0204X0	右橫桿	ROLL CAGE BAR. ,RH (Blue #4X)	1	
3	B54210301M0	後橫桿	ROLL CAGE CROSS BAR. RR(Red #1M)	1	
3	B54210303D0	後橫桿	ROLL CAGE CROSS BAR. RR (Green#3D)	1	
3	B54210304X0	後橫桿	ROLL CAGE CROSS BAR. RR (Blue #4X)	1	
4	B54210401M0	左,右邊橫桿	ROLL CAGE BAR. L.R.SIDE (Red #1M)	2	
4	B5421040000	左,右邊橫桿	ROLL CAGE BAR. L.R.SIDE(Green #3D)	2	
4	B5421040000	左,右邊橫桿	ROLL CAGE BAR. L.R.SIDE (Blue #4X)	2	
5	B54210001M0	車架總成	FRAME COMP (Red # 1M)	1	LH WHEEL DRIVE
5	B54210003D0	車架總成	FRAME COMP (Green #3D)	1	LH WHEEL DRIVE
5	B54210004X0	車架總成	FRAME COMP (Blue #4X)	1	LH WHEEL DRIVE
5	B54210001M04	車架總成	FRAME COMP (Red # 1M)	1	RH WHEEL DRIVE
5	B54210003D04	車架總成	FRAME COMP (Green #3D)	1	RH WHEEL DRIVE
5	B54210004X04	車架總成	FRAME COMP (Blue #4X)	1	RH WHEEL DRIVE
6	B5701070000	R墊圈	R-WASHER	20	
7	90200805500	帶墊圈六角螺栓	BOLT-WASHER M12*1.25*55	6	
8	90200805501	帶墊圈六角螺栓	BOLT-WASHER M8*1.25*55	10	
9	92040800003	凸緣鎖緊螺帽	NUT.FLANGE LOCK M8	8	
10	B5706030000	特殊螺栓	SPECIAL BOLT.	2	
11	B5701050000	傳動墊圈	WASHER.BELT	2	
12	B5706040000	傳動螺帽	NUT. BELT	2	
13	90201202500	帶墊圈六角螺栓	BOLT-WASHER M12*1.25*25	2	
14	92041200003	凸緣鎖緊螺帽	NUT.FLANGE LOCK M12	2	
15	B5624500000	腳踏橡膠墊	FOOT PLATE. RUBBER	4	
16	B56610000001	頭燈組合	HEADLIGHT UNIT	2	
17	90200805000	帶墊圈六角螺栓	BOLT-WASHER M8*1.25*50	2	
18	B566D010000	方向燈組合(LF,RR)	TURN SIGNAL LAMP ASSY(LF,RR)	1	
19	B566C010000	方向燈組合(RF,LR)	TURN SIGNAL LAMP ASSY(RF,LR)	1	
20	B5403810000	煞車油管調整螺栓	BOLT.BANJO	6	
21	B5403600000	前煞車油管(左)	HOSE ASSY. LH BRAKE 34"	1	
22	B54036000001	前煞車油管(右)	HOSE ASSY. RH BRAKE 43"	1	
23	B5403700000	後煞車油管	HOSE ASSY. RR BRAKE 75"	1	
24	B5544800000	加油導線	CABLE COMP. THROTTLE	1	LH WHEEL DRIVE
24	B55448000001	加油導線	CABLE COMP. THROTTLE	1	RH WHEEL DRIVE
25	B55444000001	倒檔導線	CABLE COMP. REVERSE	1	
26	B5544410000	手煞車導線	CABLE COMP. PARKING BRAKE	1	
27	B5421050000	底管	TUBE SEAT	6	
28	B5421060000	底管	TUBE SEAT	2	
29	B5661010000	頭燈燈泡	BULB, HEADLAMP	2	SERVICE PART ONLY
30	B5621000000	前擋風板	FENDER. FRT	2	
31	B5706010000	左前擋風板托架	BRACKKEY.FRONT FENDER. LH	1	
32	90020604000	螺栓	BOLT	2	
33	92400600001	尼龍鎖緊螺帽	NYLON LOCK NUT M6	10	
34	B5661020000	頭燈橡膠底座	RUBBER MOUNT.HEADLAMP	4	
35	90200601600	帶墊圈六角螺栓	BOLT-WASHER M6*16	6	

F12.1. FRAME

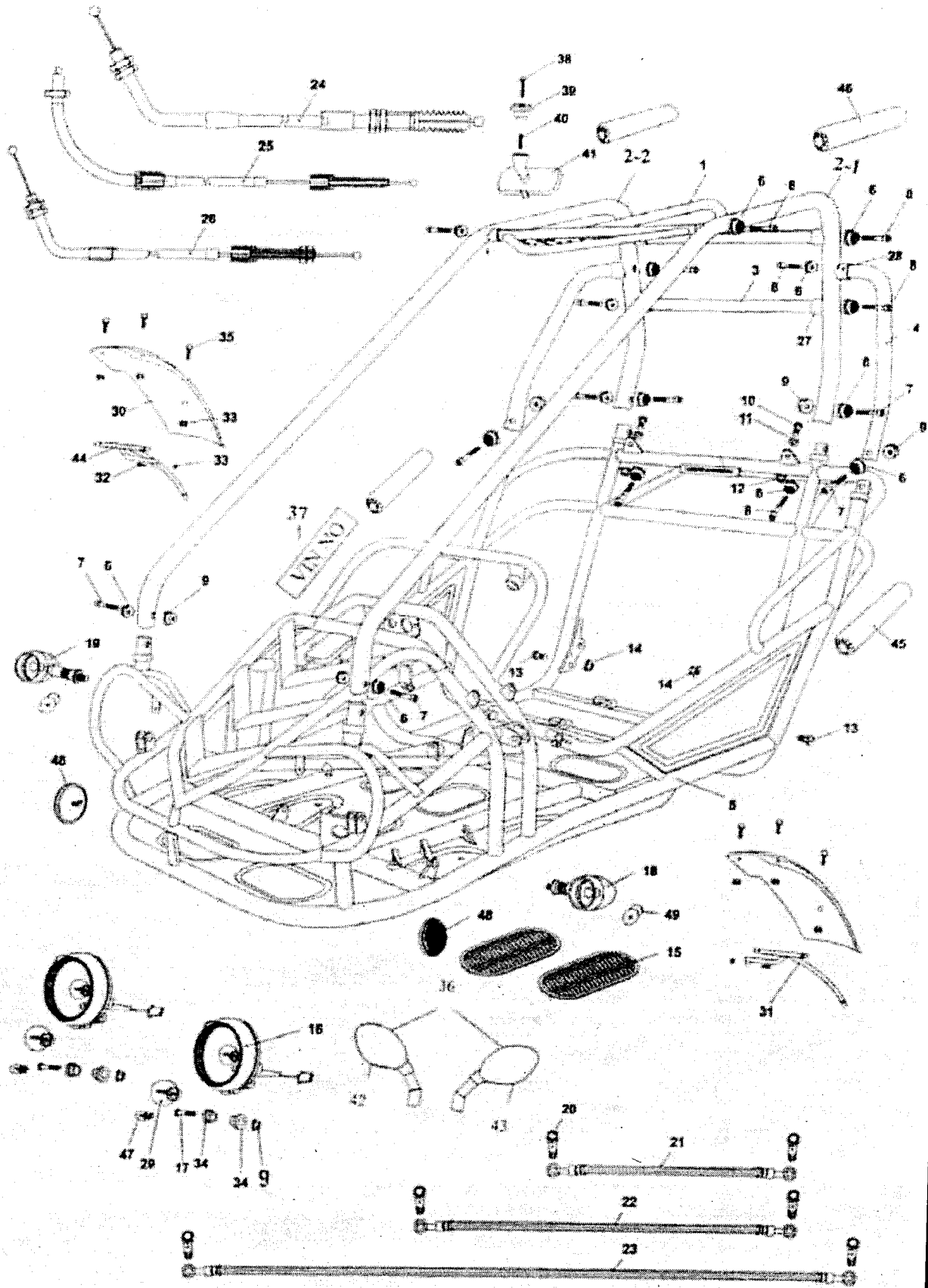


FIG. 12 FRAME GROUP

REF NO	PART NO	品名規格	PART NAME	Q'TY	REMARK
36	B5616000000	後視鏡總成	REAR MIRROR COMP.	1	
37	B5426010000	車身號碼牌	VIN PLATE	1	
38	B5616030000	螺栓	BOLT.	1	
39	B5616010000	後視鏡底座	MOUNT.REAR MIRROR	1	
40	B5616020000	後視鏡彈簧	SPRING.REAR MIRROR	1	
41	B5616040000	室內鏡	MIRROR ASSY.	1	
42	B561F020000	右後視鏡	RH BACK MIRROR	1	
43	B561F010000	左後視鏡	LH BACK MIRROR	1	
44	B570G010000	右前擋泥板托架	BRACKEY. FRONT FENDER. RH	1	
45	B5701010000	長扶手套	COVER. ROBE-RAIL, LONG	2	
46	B57010100001	短扶手套	COVER. ROBE-RAIL, SHORT	2	
47	98231205001	位置燈泡	POSITION LAMP	2	SERVICE PART ONLY
48	B5669010000	前側反光片	REFLECTOR, FRONT	2	
49	B5663130000	方向燈燈泡	BULB, SIGNAL LAMP	2	

F13. STEERING SHAFT ASSY

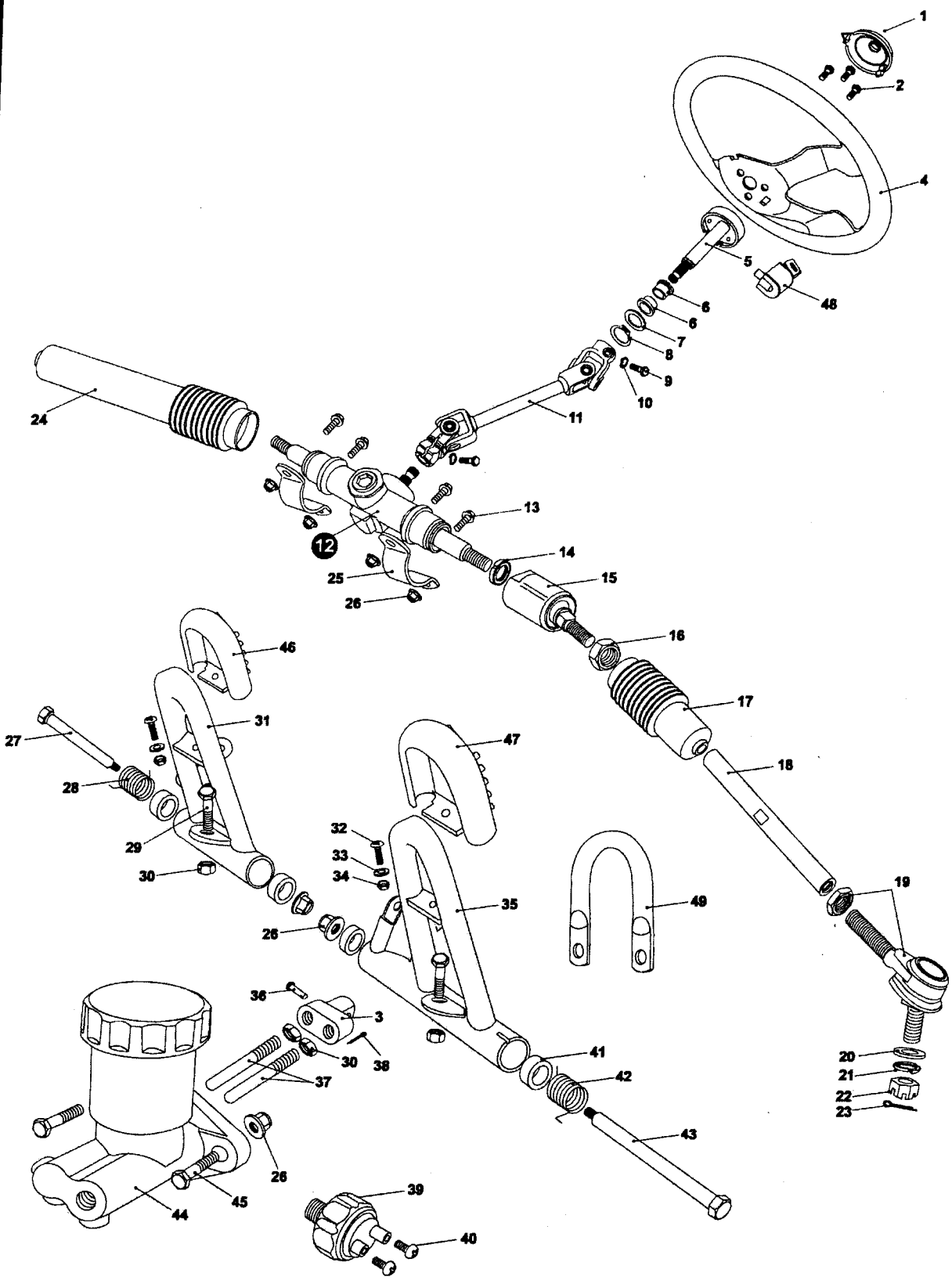


FIG. 13 STEERING SHAFT ASSY.

REF NO	PART NO	品名規格	PART NAME	Q'TY	REMARK
1	B56120300001	指導螺栓蓋	COVER. STEERING BOLT	1	
2	90190601200	皮帶螺栓	BOLT STRAP M6*12	3	
3	B5612040000	軸托架	BRACKEY. SPINDLE	1	
4	B56120000001	操縱輪	STEERING WHEEL	1	
5	B56120100001	操縱把手	STEERING SHAFT	1	
6	B5612050000	操縱把手襯套	BUSH. STEERING SHAFT	2	
7	B5612060000	特殊墊圈	SPECIAL WASHER.	1	
8	B5706080000	管夾	CIRCLIP	1	
9	90020802503	螺栓	BOLT M8*25	2	
10	92110800004	彈簧鎖緊墊圈	WASHER. LOCK	2	
11	B5612020000	操縱鏈軸	STEERING KNUCKLE	1	
12	B5445000000	操縱齒輪	STEERING GEAR	1	
13	90200802500	帶墊圈六角螺栓	BOLT-WASHER M8*1.25*25	4	
14	B5445080000	環形螺帽	ROUND NUT M16*1.5	2	
15	B5445010000	操縱球接頭	STEERING BALL JOINT	2	
16	B5445020000	螺帽	NUT	2	
17	B5445030000	防塵蓋球形接頭(左)	DUST COVER. L BALL JOINT	1	
18	B5445040000	拉桿	TIE ROD	2	
19	B5445050000	後桿	ROD END	2	
20	92141000014	平墊圈	WASHER. FLAT	2	
21	92111000003	彈簧鎖緊墊圈	WASHER. LOCK	2	
22	92071000000	堡形螺帽	NUT. CASTLE M10	2	
23	93520201501	開口銷	PIN.COTTER 2*15	2	
24	B5445060000	防塵蓋球形接頭(右)	DUST COVER. RH BALL JOINT	1	
25	B5445070000	指導齒輪托架	BRACKET. STEERING GEAR	2	
26	92040800003	凸緣鎖緊螺帽	NUT.FLANGE LOCK M8	8	
27	B5404260000	螺栓	BOLT	1	
28	B5404270000	彈簧	SPRING	1	
29	90200804000	帶墊圈六角螺栓	BOLT-WASHER M8*1.25*40	2	
30	92020800005	螺帽	NUT M8	2	
31	B5404210000	油管踏板組合	THROTTLE PEDAL COMP.	1	
32	90070501501	平頭螺絲	SCREW. PAN M5*15	2	
33	92140500017	平墊圈	WASHER. FLAT	2	
34	92400500000	尼龍鎖緊螺帽	NYLON LOCK NUT M5	2	
35	B5404200000	煞車踏板組合	BRAKE PEDAL COMP.	1	
36	93540602400	定位銷	PIN. 6*24	1	
37	B5445090000	銷軸	PIN. SPINDLE	2	
38	93520201201	開口銷	PIN.COTTER 2*12	1	
39	B5543900000	煞車燈開關總成	SWITCH ASSY. BRAKE LAMP	1	
40	90070300600	平頭螺絲	SCREW. PAN M3*6	2	
41	B5404240000	踏板襯套	BUSH. PEDAL	4	
42	B5404250000	彈簧	SPRING. BRAKE PEDAL RETURN.R	1	
43	B5404230000	踏板煞車螺栓	BOLT.BRAKE PEDAL	1	
44	B5403100000	煞車主缸	MASTER CYLINDER	1	
45	90200802700	帶墊圈六角螺栓	BOLT-WASHER M8*1.25*27	2	
46	B5404220000	加油板防護墊	"GO" PEDAL PAD	1	
47	B5404280000	踏板防護墊	"STOP" PEDAL PAD	1	
48	B5552000000	防盜鎖	STEERING LOCK		
49	B5706110000	U型保護架	MASTER CYLINDER BRACKET	1	

F14. SUSPENSION ARM ASSY

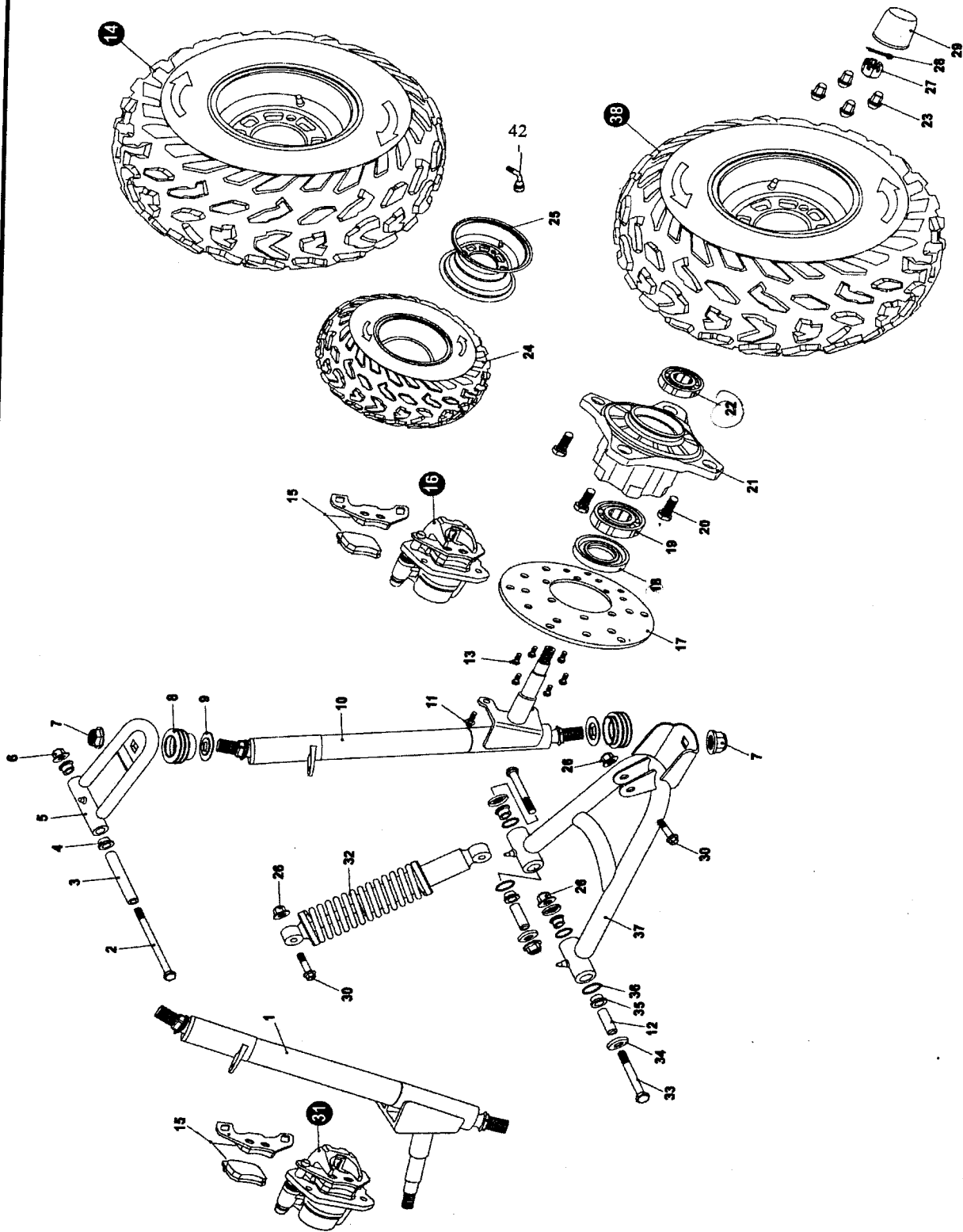


FIG. 14.1 SUSPENSION ARM ASSY.

REF NO	PART NO	品名規格	PART NAME	Q'TY	REMARK
1	B54211100001	右支撐軸	SUPPORT. STRUT AND SPINDLE, RH	1	
2	90200810500	帶墊圈六角螺栓	BOLT-WASHER M8*1.25*105	2	
3	B5446030000	上懸吊軸環	COLLAR.UPPER SUSPENSION ARM	2	
4	B5446020000	上懸吊扶手襯套	BUSH.UPPER SUSPENSION ARM	4	
5	B5446010000	上懸吊扶手	UPPER SUSPENSION ARM	2	
6	92040800003	凸緣鎖緊螺帽	NUT.FLANGE LOCK M8	2	
7	92041200003	凸緣鎖緊螺帽	NUT.FLANGE LOCK M12	4	
8	B5446040000	上端防塵油封	DUST SEAL.BALL HEAD	4	
9	B5446050000	上端間隔環	SPACER.BALL HEAD	4	
10	B54211200001	左支撐軸	SUPPORT. STRUT AND SPINDLE, LH	1	
11	90200801400	皮帶螺栓	BOLT STRAP M8*14	4	
12	B5447030000	下懸吊軸環	COLLAR.LOWER SUSPENSION ARM	4	
13	90200601200	皮帶螺栓	BOLT STRAP M6*12	12	
14	NA	右前輪總成	FRT.WHEEL ASSY., RH	1	
15	B5403310000	前煞車夾襯墊	PAD SET, FRT.BRAKE CALIPER	2	SERVICE PART ONLY
16	B5403300000	前煞車夾(左)	FRONT BRAKE CALIPER, LH	1	
17	B5403500000	前煞車圓盤	DISC, FRT. BRAKE	2	
18	95572547700	防塵油封	DUST SEAL 47*25-7	2	
19	96510620404	軸承	BEARING 6204	2	
20	90201003100	六角凸緣螺栓	BOLT. TIRE M10*1.25*31	8	
21	B54011300001	前輪轂	HUB.FR. WHEEL	2	
22	96510620303	軸承	BEARING 6203	2	
23	92051000001	城形螺帽	NUT.FLANGE LOCK M10	16	
24	X040B3200003	前輪胎(19x7-8,平胎)	TIRE, FRT (on-road)	2	
24	B540B3200000	前輪胎(20*7-8,塊狀胎)	TIRE, FRT (off road)	2	OPTIONAL
25	B5401100770	前輪圈	RIM, FRT (SILVER)	2	
26	92041000003	凸緣鎖緊螺帽	NUT, FLANGE LOCK M10	8	
27	92071400000	城形螺帽	NUT. CASTLE M14	2	
28	93520202001	開口銷	PIN.COTTER 3*30	2	
29	B54013100001	前輪轂蓋	COVER.FR.HUB	2	
30	90201004000	帶墊圈六角螺栓	BOLT-WASHER M10*1.25*40	4	
31	B540C300000	前煞車夾(右)	FRONT BRAKE CALIPER, RH	1	
32	B5471000000	前避震器總成	CUSHION ASSY., FRT	2	
33	90201008000	帶墊圈六角螺栓	BOLT-WASHER M10*1.25*80	4	
34	B5447010000	下懸吊扶手防塵蓋	DUST CAP.LOWER SUSPENSION ARM	8	
35	B5447020000	下懸吊扶手襯套	BUSH.LOWER SUSPENSION ARM	8	
36	95512100000	O形環	O-RING 21.2*2.65	8	
37	B5447000000	下懸吊總成	LOWER SUSPENSION ARM ASSY	2	
38	NA	左前輪總成	FRT.WHEEL ASS'Y., LH	1	
42	X040B330000	汽門嘴	VALVE, TIRE	2	

F15. REAR CARGO RACK/SEAT/BELT

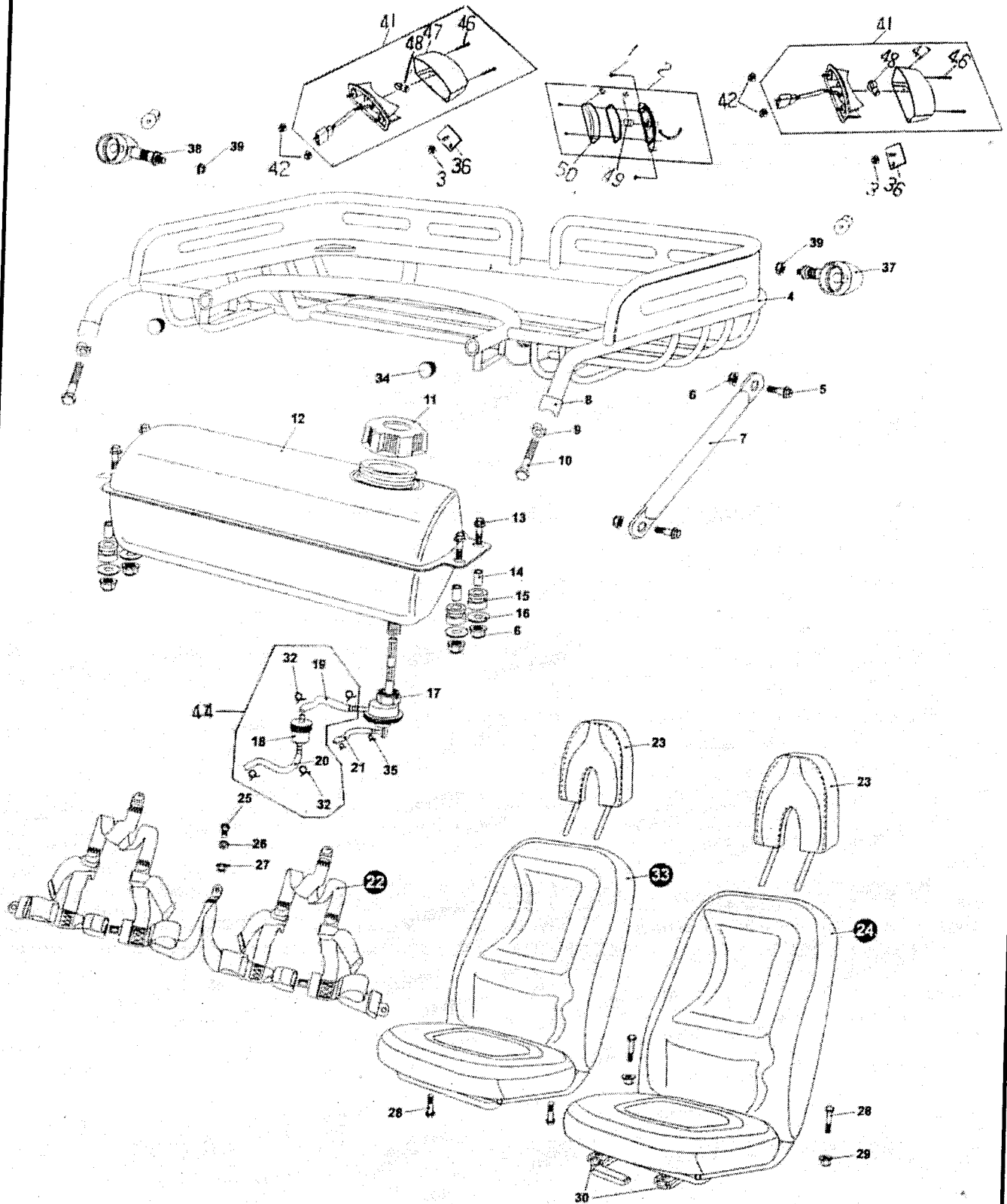


FIG. 15 REAR CARGO RACK/SEAT/BELT

REF NO	PART NO	品名規格	PART NAME	Q'TY	REMARK
1	90110401200	自攻螺釘	TAPPING SCREW	2	
2	P56669000001	牌照燈	TAIL LIGHT	1	
3	92020500000	六角凸緣螺帽	HEXAGON FLANGE NUT	4	
4	B56762001M01	後置物架	REAR CARGO RACK (RED #1M)	1	
4	B56762003D01	後置物架	REAR CARGO RACK (GREEN # 3D)	1	
4	B56762004X01	後置物架	REAR CARGO RACK (BLUE #4X)	1	
5	90200802000	帶墊圈六角螺栓	BOLT-WASHER M8*1.25*20	4	
6	92040800003	凸緣鎖緊螺帽	NUT.FLANGE LOCK M8	8	
7	B56762101M0	後置物架支撐桿	SUPPORTER.REAR CARGO RACK (RED)	2	
7	B56762103D0	後置物架支撐桿	SUPPORTER.REAR CARGO RACK (GREEN)	2	
7	B56762104X0	後置物架支撐桿	SUPPORTER.REAR CARGO RACK (BLUE)	2	
8	B5676220000	底管(32D)	TUBE SEAT	2	
9	B5701030000	R形墊圈	R-WASHER	2	
10	90200805501	皮帶螺栓	BOLT STRAP M8*1.25*55	2	
11	B55213000001	汽油箱蓋組合	CAP COMP., FUEL FILLER	1	
12	B55215001M0	汽油箱	TANK COMP. FUEL (RED)	1	
12	B55215003D0	汽油箱	TANK COMP. FUEL (GREEN)	1	
12	B55215004X0	汽油箱	TANK COMP. FUEL (BLUE)	1	
13	90200802500	帶墊圈六角螺栓	BOLT-WASHER M8*1.25*25	4	
14	B5706050000	油箱軸環組	COLLAR.TANK COMP.	4	
15	B5701040000	橡膠固定座	RUBBER MOUNT	4	
16	92140800008	平墊圈	WASHER. FLAT	4	
17	B5523000000	自動油杯總成	FUEL AUTOCOCK ASS'Y.	1	
18	B5526040000	濾清器	FILTER	1	
19	P652A2100001	燃料油管組(1)	TUBE COMP.FUEL #1	1	
20	B5526022000	燃料油管組(2)	TUBE COMP.FUEL #2	1	
21	B5526030000	負壓管	TUBE COMP.VACUUM	1	
22	B5671020000	安全帶	BELT, SAFETY	1	
23	B5671010000	頭枕	HEAD-REST	2	
24	B5671000000	座墊總成(左)	SEAT COMP., LH	1	
25	B5706030000	特殊螺栓	BOLT. SPECIAL	1	
26	B5701050000	傳動墊圈	WASHER.BELT	1	
27	B5706040000	傳動螺帽	NUT. BELT	1	
28	90020804001	皮帶螺栓	BOLT STRAP M8*1.25*40	2	
29	92040800003	凸緣鎖緊螺帽	NUT.FLANGE LOCK M8	2	
30	B5671300000	座墊扶手座	RAIL SET.SEAT	1	
32	92220900001	燃料管夾	CLIP.FUEL TUBE	1	
33	B567A000000	座墊總成(右)	SEAT COMP.,RH	1	
34	B5701060000	軟管蓋	COVER.TUBE	1	
35	E1706020000	管夾	CLIP.VACUUM TUBE	2	
36	C5669000000	反光片	REFLECTOR	2	
37	B566C010000	方向燈組合(RF,LR)	TIRN SIGNAL LAMP ASSY(RF,LR)	1	SERVICE PART ONLY
38	B566D010000	方向燈組合(LF,RR)	TIRN SIGNAL LAMP ASSY(LF,RR)	1	SERVICE PART ONLY
39	92021000001	六角螺帽	HEXAGON NUT	4	
40	92140500014	平墊圈	PLAIN WASHER	2	
41	P16660000007	後燈	BACK LAMP ASSY	2	
43	92111000000	彈簧墊圈	SPRING WASHER	4	
45	92141000000	平墊圈	PLAIN WASHER	4	
46	P166F0600006	自攻螺絲	TAPPING SCREW	4	
47	P166F0100006	後燈蓋	LEN, BACK LAMP	2	
48	P166F0400006	後燈燈泡	BULB, BACK LAMP	2	
49	P566F960000	照亮燈泡	BULB.LICENCE LIGHT	1	SERVICE PART ONLY
50	P566F910000	牌照燈蓋	LEN, LICENCE LIGHT	1	

F16. REAR SWING ARM ASSY

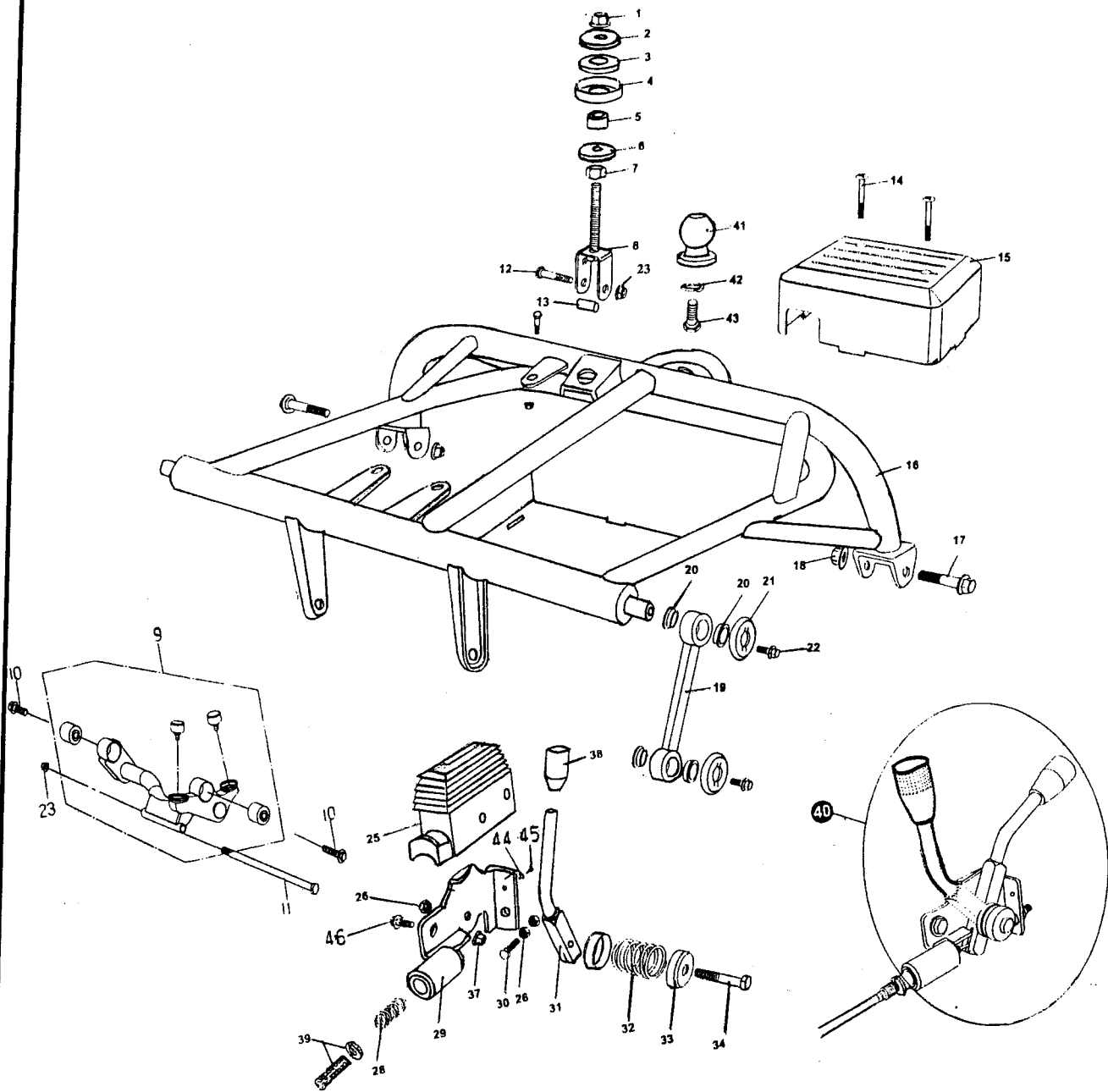


FIG. 16 REAR SWING ARM ASSY. UPPER

REF NO	PART NO	品名規格	PART NAME	Q'TY	REMARK
1	92041200003	凸緣鎖緊螺帽	NUT.FLANGE LOCK M12	1	
2	B5486020000	墊圈	WASHER.ENGINE MOUNT LINK	1	
3	B5486030000	襯墊	CUSHION.ENGINE MOUNT LINK	1	
4	B5486040000	隔片	SPACER.ENGINE MOUNT LINK	1	
5	B5486050000	軸承	COLLAR.ENGINE MOUNT LINK	1	
6	92141200012	平墊圈	WASHER. FLAT	1	
7	92021200001	螺帽	NUT M12	1	
8	B5486010000	引擎連接座	ENGINE MOUNT LINK	1	
9	B5486000000	引擎吊架組合	ENGINE HANGER ASS'Y.	1	
10	90191005000	六角螺栓	HEXAGON BOLT	2	
11	90191018000	螺栓	HEXAGON BOLT	1	
12	90201004500	帶墊圈六角螺栓	BOLT-WASHER M10*1.25*45	1	
13	B54860700001	襯套	COLLAR.ENGINE MOUNT LINK	1	
14	90070605500	盤頭螺栓	SCREW. PAN M6*55	2	
15	B5624060000	電器總成蓋	COVER.ELECTAIC ASS'Y	1	
16	B5483012600	後搖臂組合(上)	REAR SWING ARM ASS'Y., UPPER	1	E/G no. H03803
17	90201206000	帶墊圈六角螺栓	BOLT-WASHER M12*1.25*60	2	
18	92041200003	凸緣鎖緊螺帽	NUT.FLANGE LOCK M12	2	
19	B5483060000	連桿	CON'ROD	2	
20	B5483070000	連桿套筒	BUSH.CON'ROD	8	
21	B5483080000	隔片	SPACER.CON'ROD	4	
22	90200801600	帶墊圈六角螺栓	BOLT-WASHER M8*1.25*16	4	
23	92061000001	螺帽	U NUT	2	
25	B5451020000	倒擋桿蓋	COVER.REVERSE LEVER	2	SERVICE PART ONLY
26	92400800002	尼龍鎖緊螺帽	NYLON LOCK NUT M8	6	SERVICE PART ONLY
28	B5451080000	彈簧	SPRING.LEVER	2	SERVICE PART ONLY
29	B5451010000	托架桿	BRACKET.LEVER	2	SERVICE PART ONLY
30	90200803001	螺栓	BOLT M8X30	2	SERVICE PART ONLY
31	B5451060000	手煞車拉桿	LEVER.REVERSE,PARKING BRAKE	2	SERVICE PART ONLY
32	B5451070000	彈簧線圈	SPRING.CABLE	1	SERVICE PART ONLY
33	B5451090000	隔片	SPACER.LEVER	4	SERVICE PART ONLY
34	90200804000	帶墊圈六角螺栓	BOLT-WASHER M8*1.25*40	2	SERVICE PART ONLY
37	92040800003	凸緣鎖緊螺帽	NUT.FLANGE LOCK M8	2	SERVICE PART ONLY
38-1	B545A060000	拉桿蓋(綠)	COVER.LEVER.GREEN/GREEN	2	SERVICE PART ONLY
38-2	B545A060600	拉桿蓋(黑)	COVER.LEVER.GREEN/BLACK	2	SERVICE PART ONLY
39	B5451050000	調整拉桿線	ROD ADJUSTING.CABLE	2	SERVICE PART ONLY
40	NA	手煞車/倒擋 桿組合	PARING BRAKE/REVERSE LEVER ASS'Y	2	
41	B5676020000	托球頭	TOW BALL	1	
42	92111800000	彈簧鎖緊墊圈	WASHER. LOCK	1	
43	90021804000	螺栓	BOLT M18*40	1	
44	92140500017	平墊圈	PLAIN WASHER		
45	90070501200	平頭螺絲	SCREW. PAN M5*12	2	SERVICE PART ONLY
46	90200802000	帶墊圈六角螺栓	BOLT-WASHER M8*1.25*20	2	SERVICE PART ONLY

F17. REAR SWING ARM

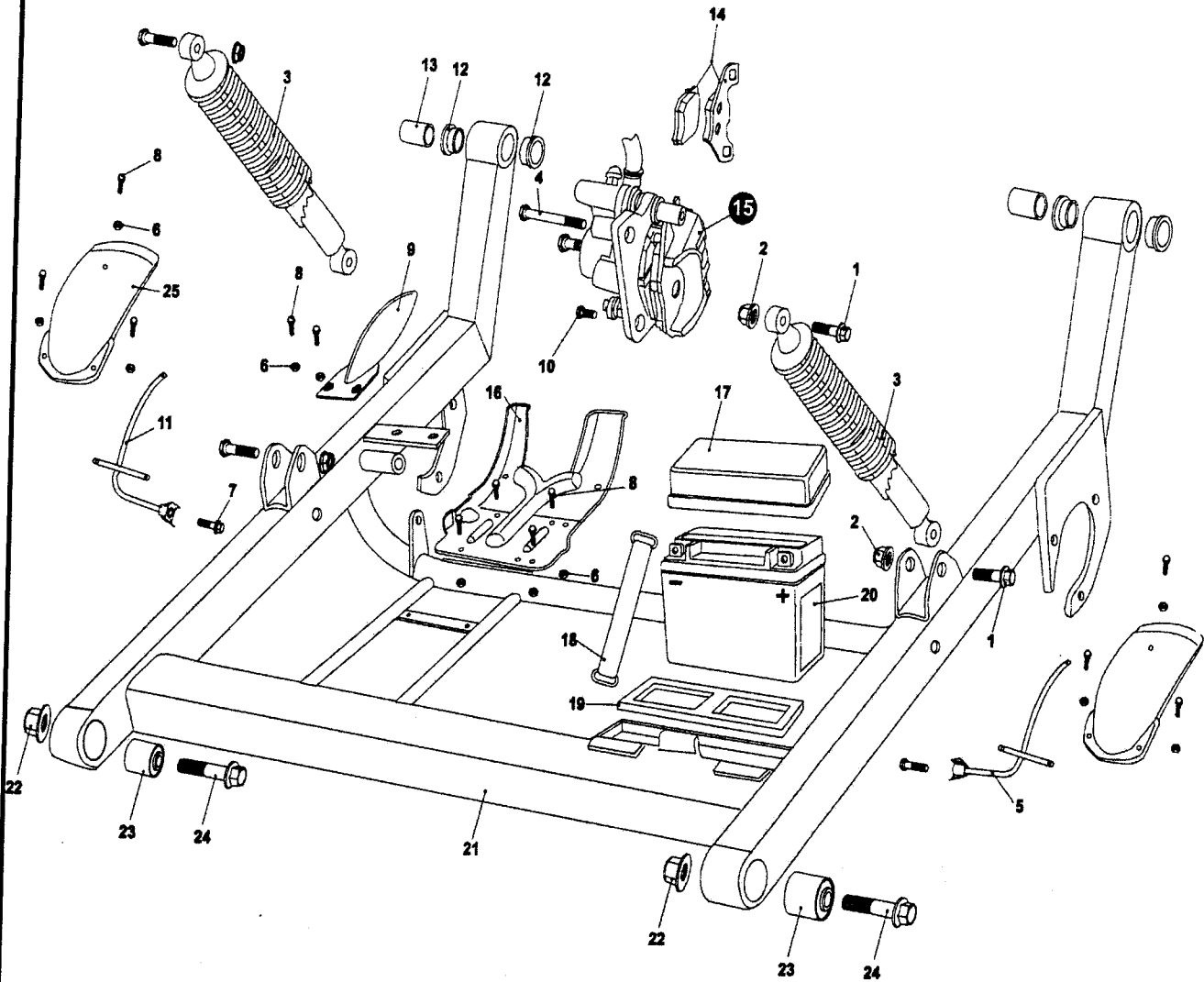


FIG. 17 REAR SWING ARM

REF NO	PART NO	品名規格	PART NAME	Q'TY	REMARK
1	90201004000	帶墊圈六角螺栓	BOLT-WASHER M10*1.25*40	4	
2	92041000003	凸緣鎖緊螺帽	NUT.FLANGE LOCK M10	4	
3	B5481000000	後避震器總成	CUSHION ASS'Y.RR	2	
4	90200810000	皮帶螺栓	BOLT STRAP M8*1.25*100	1	
5	B5634020000	左後土除托架	BRACKET REAR FENDER.L	1	
6	92400600001	尼龍鎖緊螺帽	NYLON LOCK NUT M6	12	
7	90200804500	帶墊圈六角螺栓	BOLT-WASHER M8*1.25*45	2	
8	90200601600	帶墊圈六角螺栓	BOLT-WASHER M6*16	12	
9	B5634010000	後煞車圓盤蓋	COVER, DISC.RR	1	
10	90200801201	皮帶螺栓	BOLT STRAP M8*1.25*12	1	
11	B5634030000	右後土除托架	BRACKET REAR FENDER, RH	1	
12	B5483040000	搖臂襯套	BUSH.SWING ARM	4	
13	B5483050000	搖臂環	COLLAR.SWING ARM	2	
14	B5407410000	後煞車蹄片	PAD SET.RR.BRAKE	1	SERVICE PART ONLY
15	B5406600000	後煞車夾	CALIPER ASS'Y., RR	1	
16	B5406610000	碟盤擋泥板	GUARD.CHAIN.DISC	1	
17	B5624030000	電瓶蓋	COVER.BATTERY	1	
18	B5583030000	電瓶束帶	BAND, BATTERY	1	
19	B5583010000	電瓶襯墊	CUSHION.BATTERY UNDER	1	
20	M2583000000	電瓶	BATTERY	1	
21	B5483000000	下部後搖臂組合	RR.SWING ARM COMP., UNDER	1	
22	92041200003	凸緣鎖緊螺帽	NUT.FLANGE LOCK M12	2	
23	B5701020000	套管襯墊	CUSHION BUSH.SWING ARM	2	
24	90201206000	帶墊圈六角螺栓	BOLT-WASHER M12*1.25*60	2	
25	B5634000000	後土除	FENDER, RR	2	

F18.1. REAR HOUSING

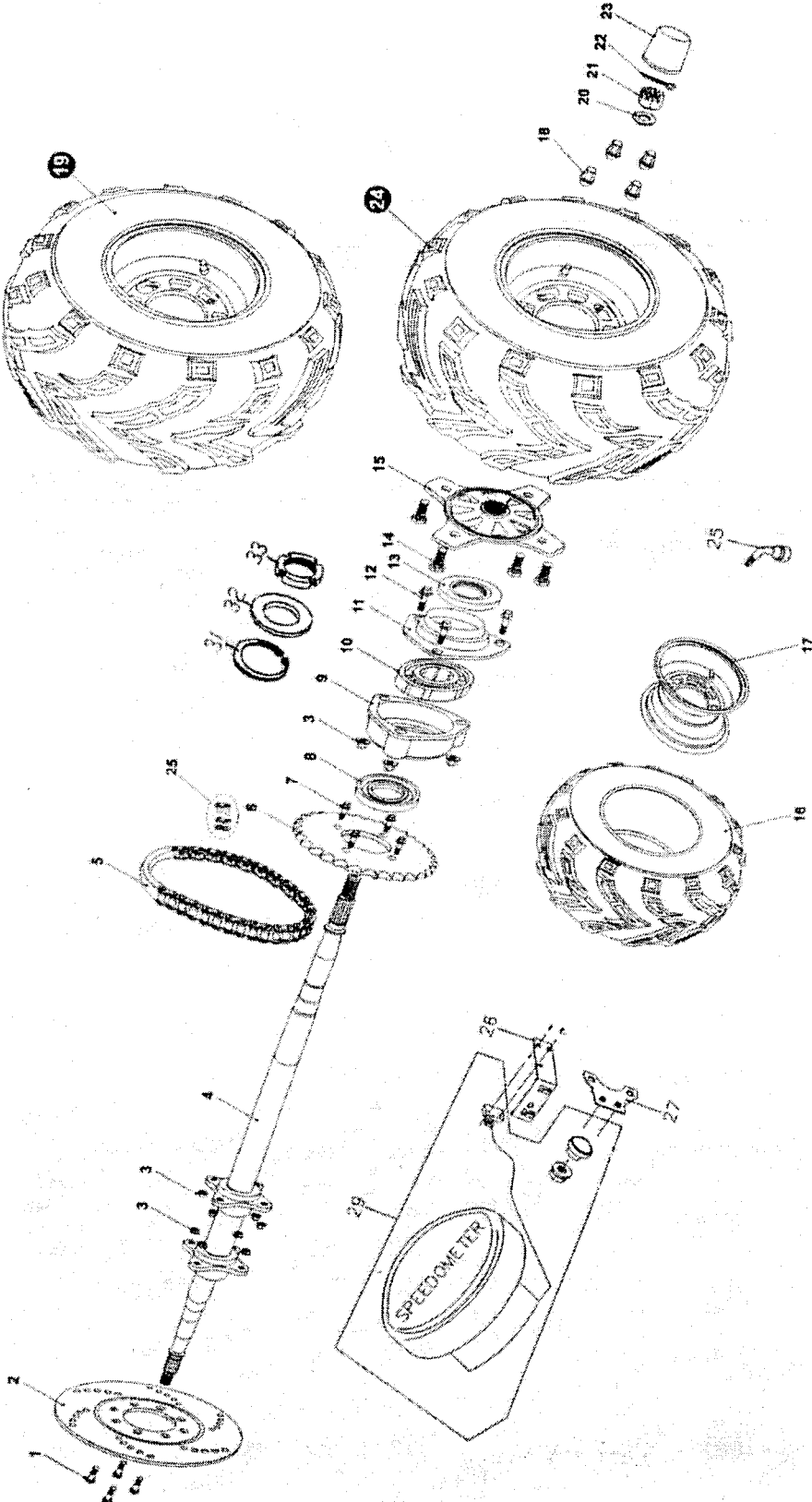


FIG. 18.1 REAR HOUSING

REF NO	PART NO	品名規格	PART NAME	Q'TY	REMARK
1	90200802200	帶墊圈六角螺栓	BOLT-WASHER M8*1.25*22	4	
2	B5406800000	後煞車碟盤	DISC.RR.BRAKE	1	
3	92040800003	凸緣鎖緊螺帽	NUT.FLANGE LOCK M8	14	
4	B54074300001	後軸	REAR AXLE	1	From E/G no. H02905
5	B5485000000	驅動鏈條	DRIVING CHAIN	1	
6	B5485020000	後鏈輪	REAR SPROCKET	1	
7	90200802700	帶墊圈六角螺栓	BOLT-WASHER M8*1.25*27	4	
8	B5407490000	防塵油封	DUST SEAL	2	
9	B54074400001	後軸箱組合	HOUSING COMP.RR.AXLE BRG	2	
10	96510620600	軸承	BEARING	2	
11	B5407460000	軸承座	BEARING BASE	2	
12	90200804000	帶墊圈六角螺栓	BOLT-WASHER M8*1.25*40	6	
13	B5407170000	防塵油封	DUST SEAL	2	
14	90191003100	六角凸緣螺栓	BOLT. TIRE M10*1.25*31	8	
15	B54071300001	後輪轂	HUB.REAR AXLE	2	
16	B540G3200001	後輪胎(255/60-10)	TIRE, RR (On-Road)	2	
16	B540G320000	後輪胎(22*10-10)	TIRE, RR (off road)	2	
17	B5407140770	後輪圈	RIM, RR (SILVER)	2	
18	92041000003	凸緣鎖緊螺帽	NUT.FLANGE LOCK M10	8	
19	NA	右後輪組合	REAR WHEEL ASS'Y, RH	2	
20	B5407480000	後輪隔片	SPACER.RR.WHEEL	2	
21	B5407160000	城形螺帽	NUT.CASTLE	2	
22	93520202000	開口銷	PIN.COTTER 4*30	2	
23	B54071500001	後轂蓋	COVER.RR.HUB	2	
24	NA	左後輪組合	REAR WHEEL ASS'Y, LH	2	
25	X040B330000	汽門嘴	VALVE, TIRE	2	
26	B5421261000	計速感應器固定板	FIXED PLATE, SENSOR	1	
27	X0561062000	計速感應器固定板2	FIXED PLATE 2, SENSOR	1	
28	90050301000	十字槽扁圓頭螺釘	C-R MACHINE TRUSS HD, TAPPING SCRE	2	
29	B5561000000	碼錶總成	SPEEDOMETER ASSY.	1	
30	B5485030000	鍊條環扣	MASTER LINK, CHAIN	1	
31	92166200000	C型扣環	RETAINING RING C TYPE	1	
32	B5407500000	軸承用螺帽墊圈	WASHER	1	
33	B5407510000	軸承用螺帽	BEARING NUT	1	

F19.1. WIRING

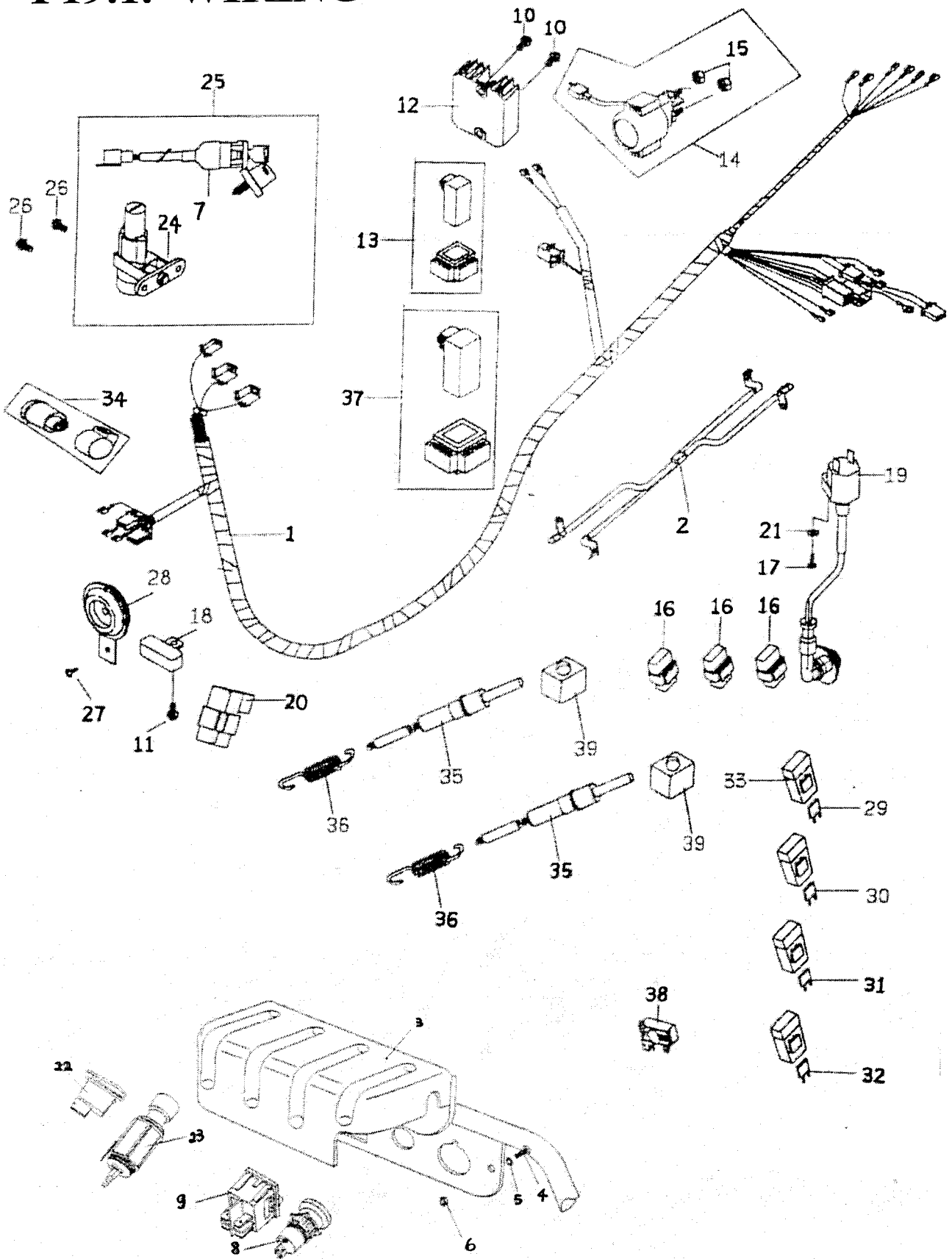


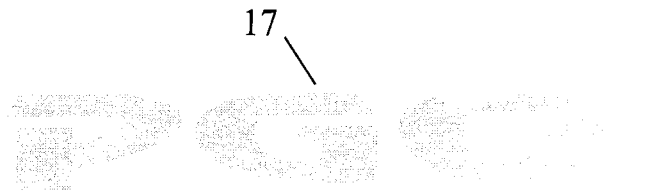
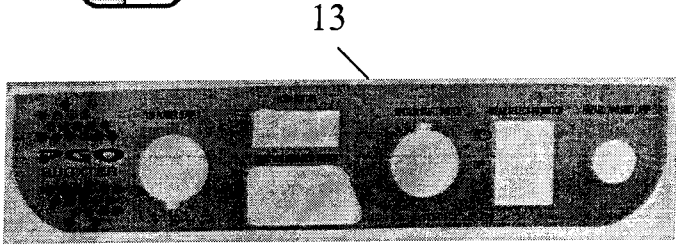
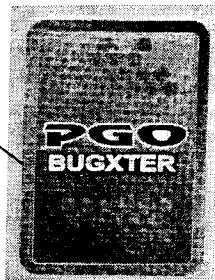
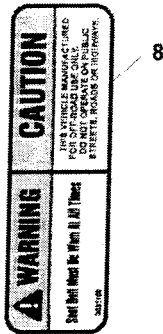
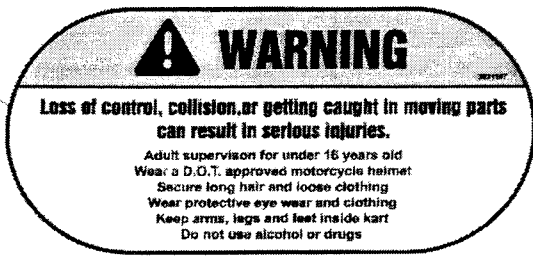
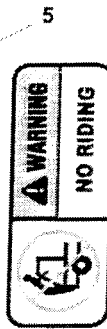
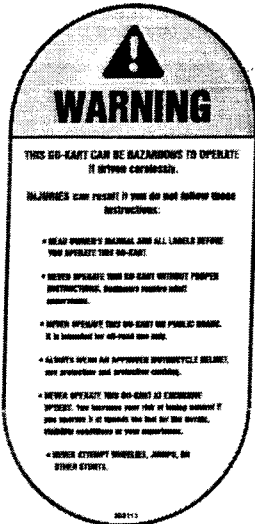
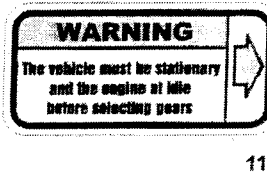
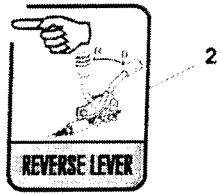
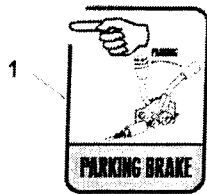
FIG. 19 WIRE HARNESS / ELECTRICAL

REF NO	PART NO	品名規格	PART NAME	Q'TY	REMARK
1	B5581602000	主配線總成	WIRE HARNESS. (used with item #37)	1	Oct. 2004
2	B5583020000	電瓶正負極線總成	BATTERY (+,-) LINE COMP	1	
3	B5543910000	開關蓋	COVER. SWITCH	1	
4	90050601500	扁頭螺絲	SCREW.PAN M6*15	2	
5	92140600021	平墊圈	WASHER. FLAT	2	
6	92020600003	尼龍鎖緊螺帽	NYLON LOCK NUT M5	2	
7	B5552000000	電源鎖	IGNITION SWITCH	1	SERVICE PART ONLY
8	B5561010000	車輛駐車按鈕	PARKING BUTTON	1	
9	B5561020000	頭燈開關	HEADLAMP SWITCH		
10	90190602000	六角凸緣螺栓	HEXAGON FLANGE BOLT	2	
11	90190601200	六角凸緣螺栓	HEXAGON FLANGE BOLT	1	
12	ES584000000	穩壓器	RECTIFIER COMP.REGULATE	1	
13	C1582001000	C.D.I電子點火控制器	UNIT COMP.,C.D.I	1	
14	C1581001000	起動繼電器	STARTING RELAY	1	
15	92030600004	六角螺帽	HEXAGON NUT	2	SERVICE PART ONLY
16	ES581200000	繼電器	RELAY	3	
17	90070502000	十字槽扁圓頭螺釘	C-R MACHINE TRUSS HD, TAPPING SCRE	1	
18	P15866000002	電阻器	RESISTOR COMP.	1	
19	B5584600000	點火線圈總成	COIL COMP.IGNITION ASSY.	1	
20	C1582500000	頭燈控制器	HEADLAMP CONTROLLER	1	
21	92110500000	彈簧鎖緊墊圈	SPRING LOCK WASHER	1	
22	B5561040000	喇叭開關	HORN BUTTON		
23	B5561050000	點煙器 香菸盒	CIGAR LIGHTER & cap	1	
24	B5553000000	防盜鎖總成	BURGLARGROOF LOCK COMP.	1	SERVICE PART ONLY
25	B5551000000	鎖總成	LOCK COMP.	1	
26	90260601001	有頭內梅花螺栓	HEAD INNER BOLT	2	
27	90190601500	六角凸緣螺栓	HEXAGON FLANGE BOLT(M6*15)	1	
28	B5583600000	喇叭	HORN.	1	
29	98701205000	保險絲 5A	FUSE 5A	1	included in #1
30	98701207500	保險絲 7.5A	FUSE 7.5A	1	included in #1
31	98701210000	保險絲 10A	FUSE 10A	1	included in #1
32	98701215000	保險絲 15A	FUSE 15A	1	included in #1
33	98701200000	保險絲盒	CASE, FUSE	4	included in #1
34	P2586011000	方向繼電器	SIGNAL FLASHER	1	
35	B5581620000	倒檔安全開關	SAFETY SWITCH,REVERSE GEAR	2	
36	B5451101000	彈簧	SPRING	2	
37	C1581300000	倒車防護器組合	REVERSE SAFETY UNIT	1	
38	B5546010000	方向燈開關	SIGNAL SWITCH	1	
39	B5301110000	感測器飾蓋	CAP, SAFETY SENSOR	2	

237 B57012200000

Black Rubber plug

F20. WARNING STICKERS



EXPORTER:

SOCIETE COMMERCIALE EURO-TAIWANAISE
3rd Floor, No. 112, Chung Shan N. Rd.,
Sec. 2, Taipei, Taiwan, ROC
Tel: 886 2 25413253
Fax: 886 2 25367575
e-mail: service@eurotai.com